



LABOUR FORCE

NEW SOUTH WALES AND
AUSTRALIAN CAPITAL TERRITORY

EMBARGO: 11:30AM (CANBERRA TIME) FRI 12 NOV 1999

CONTENTS

	<i>page</i>
Notes	2
 SUMMARY OF FINDINGS	
New South Wales	3
Australian Capital Territory	8
 LIST OF TABLES AND GRAPHS	
New South Wales	11
Australian Capital Territory	12
 INFORMATION	
Explanatory notes	46
Appendix:	
Supplementary topics	51
Regions of NSW and ACT	52
Regions of NSW and ACT—maps	57
Technical note: data reliability	58
Standard errors	61

- For more information about these and related statistics, contact Kevin Fagan on Sydney 02 9268 4315, or Client Services in any ABS office as shown on the back cover of this publication.

NOTES

FORTHCOMING ISSUES *ISSUE (Quarter)* *EXPECTED RELEASE DATE*

	November 1999	4 February 2000
	February 2000	28 April 2000

ABOUT THIS PUBLICATION

This publication contains estimates of the civilian labour force in New South Wales (NSW) and the Australian Capital Territory (ACT) derived from the Labour Force Survey (LFS) component of the Monthly Population Survey, which is conducted on a sample basis throughout Australia. Explanatory notes for data contained in this publication can be found on page 46. Care should be taken in the interpretation of month-to-month movements in the estimates. Survey estimates are subject to sampling and non-sampling variability as explained in the Technical note on data reliability on page 58.

SYMBOLS AND OTHER USAGES

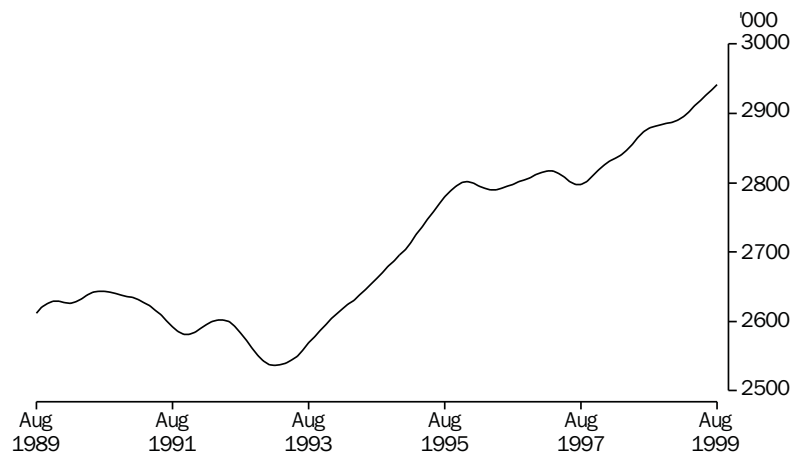
A	Area
C	City
MSR	Major Statistical Region
n.e.c.	Not elsewhere classified
SD	Statistical Division
SR	Statistical Region
SRS	Statistical Region Sector
*	Subject to sampling variability too high for most practical purposes. See the Technical note on data reliability.
. .	Not applicable
—	Nil or rounded to zero (including null cells)

Gregory W. Bray
Regional Director
New South Wales

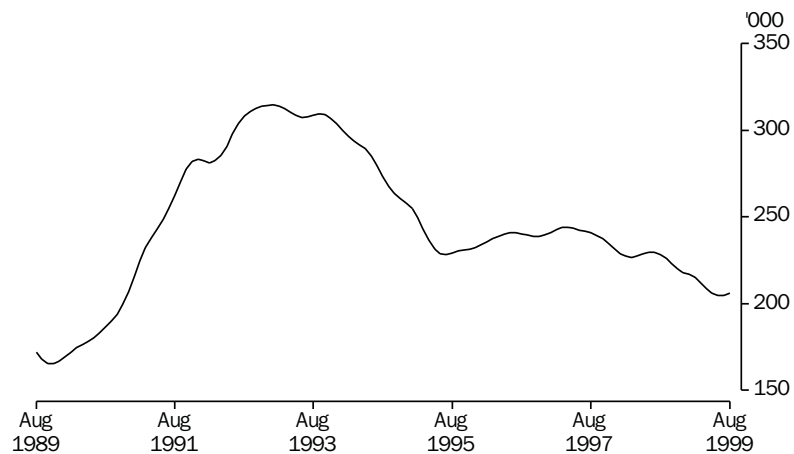
SUMMARY OF FINDINGS NSW

TREND ESTIMATES

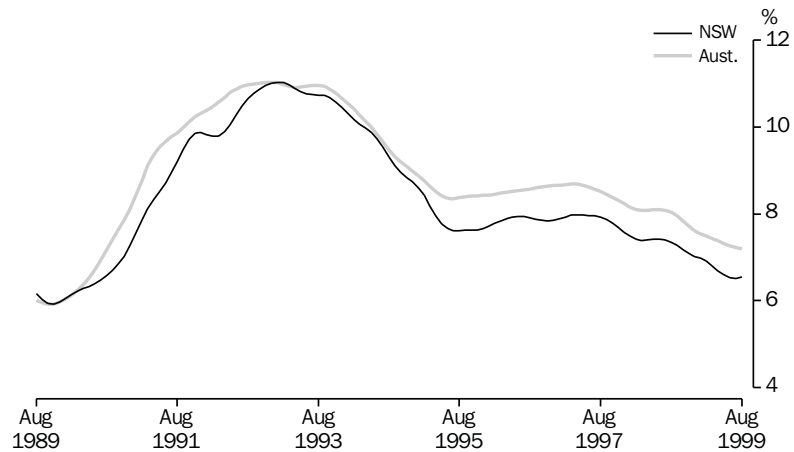
Employed persons From a low of 2,537,000 in February 1993, the trend estimate of employed persons rose by 10% to 2,801,000 in December 1995 and then fluctuated for the next year and a half. Since July 1997, the trend has risen steadily and reached 2,940,900 in August 1999.



Unemployed persons From a high of 315,000 in January 1993, the trend estimate of unemployed persons in NSW fell to 228,000 in July 1995. After a period of slow growth, the trend peaked at 244,000 in April 1997. It then fell steadily until July 1999. In August 1999 it reached 205,900.



Unemployment rate From a high of 11.0% early in 1993, the trend unemployment rate in NSW fell to 7.6% in July 1995 and remained there until November 1995. The trend then rose slowly and remained at 8.0% between March and July 1997 before falling steadily to 6.5% in August 1999.



Participation rate and labour force The trend estimate of the participation rate in NSW rose from 61.5% at the beginning of 1998 to 62.0% in July and August 1998. It then dropped to 61.6% in the period December 1998 to March 1999 but has risen again to reach 61.9% in August 1999.

The estimated labour force in NSW remained fairly steady over the period from August 1998 to January 1999. Since then the trend has risen.

SEASONALLY ADJUSTED ESTIMATES

The seasonally adjusted estimate of employment in NSW rose by 14,500 in the three months to August 1999. The number of unemployed rose by 9,300 in the same period and at August 1999 stood at 212,800. Over the year the unemployment rate fell from 7.5% in August 1998 to 6.1% in July 1999, before rising again to 6.8% in August 1999.

REGIONS OF NSW

While the Labour Force Survey (LFS) is designed primarily to produce reliable estimates at the national and State/Territory level, it also delivers estimates for a number of regions within States. As with national and State estimates, regional labour force estimates are subject to sampling error. Since estimates for regions are components of corresponding estimates at the State level—and are thus based on a considerably smaller sample size—they are subject to higher relative standard errors. Care should therefore be taken in interpretation of regional estimates, particularly month-to-month movements.

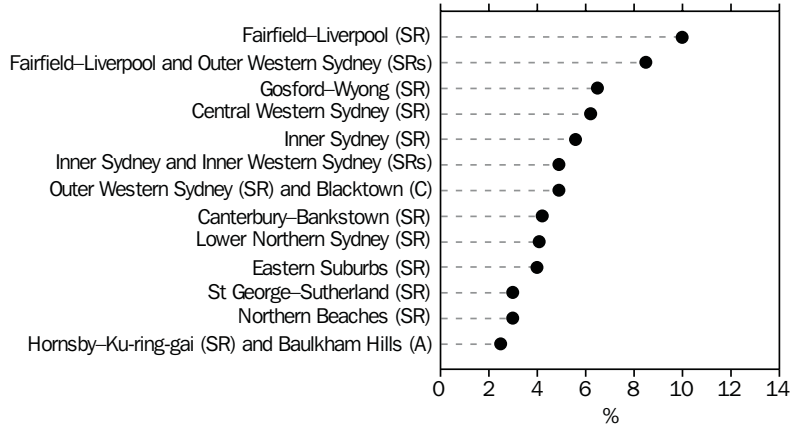
Sydney There were 1.9 million employed people in the Sydney Major Statistical Region (MSR) in August 1999, a rise of 49,000 over the year. The unemployment rate fell from 6.0% in August 1998 to 4.4% in July 1999 before rising to 4.8% in August 1999.

Regional unemployment rates within the Sydney MSR in August 1999 ranged from 2.5% in Hornsby Ku-Ring-Gai Statistical Region (SR) and Baulkham Hills Area to 10.0% in Fairfield–Liverpool SR. Participation rates varied from 51.8% in Gosford–Wyong SR to 68.4% in Eastern Suburbs SR.

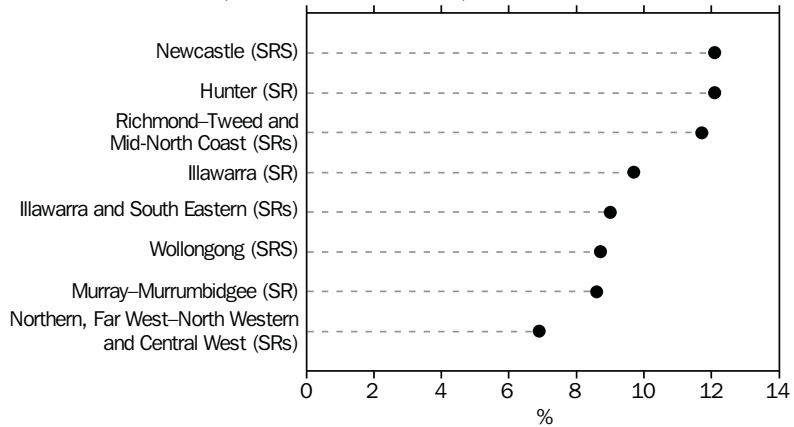
Balance of NSW There were 968,000 employed people in Balance of NSW MSR in August 1999, 31,000 more than in August 1998. The unemployment rate in August 1999 was 9.7%, identical to the figure recorded in August 1998, but a rise from the 8.0% recorded in July 1999.

Unemployment rates ranged from 6.9% in Northern, Far West–North Western SR to 12.1% in Hunter SR and Newcastle SRS. Participation rates varied from 51.1% in Richmond–Tweed and Mid-North Coast SRs to 64.6% in Northern, Far West–North Western and Central West SRs.

UNEMPLOYMENT RATE, SYDNEY MSR, AUGUST 1999



UNEMPLOYMENT RATE, BALANCE OF NSW MSR, AUGUST 1999



INDUSTRY AND OCCUPATION

The industry in NSW with the highest gain in employment in the year to August 1999 was Wholesale trade with a rise of 38,000 or 23% while the largest fall occurred in Manufacturing (15,000 or 4.2%).

The industries with the highest employment in August 1999 were Retail trade with 407,000 (14.0% of total employed) and Manufacturing with 347,000 (12.0%).

The major occupation group with the largest annual gain in employment in the year to August 1999 was Associate professionals with an increase of 60,000 (22.1%) while the largest fall was in Elementary clerical, sales and service workers (18,000 or 6.4%).

AGE

The unemployment rate at August 1999 decreased with age from 16.0% for 15–19 year olds to 5.5% for the 55–59 years age group.

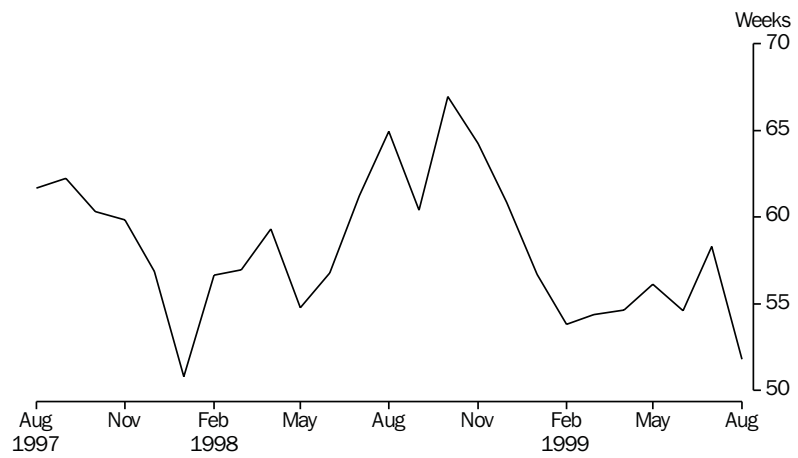
BIRTHPLACE

In August 1999, the unemployment rate for Australian-born people in NSW was 6.5% compared to 5.1% for those born overseas in the main English-speaking countries and 7.4% for those born in other countries.

DURATION OF UNEMPLOYMENT

In August 1999, the average (mean) duration of unemployment was 52 weeks and the median duration of unemployment was 26 weeks. Approximately 29% of the unemployed had been unemployed for a year or more.

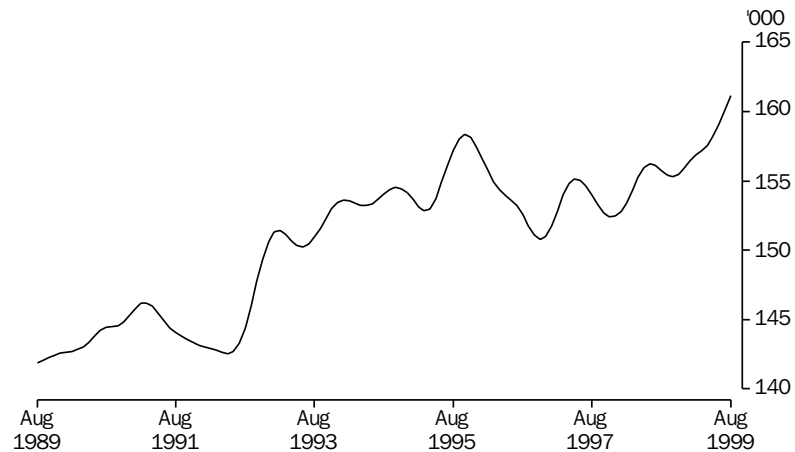
Average duration of unemployment



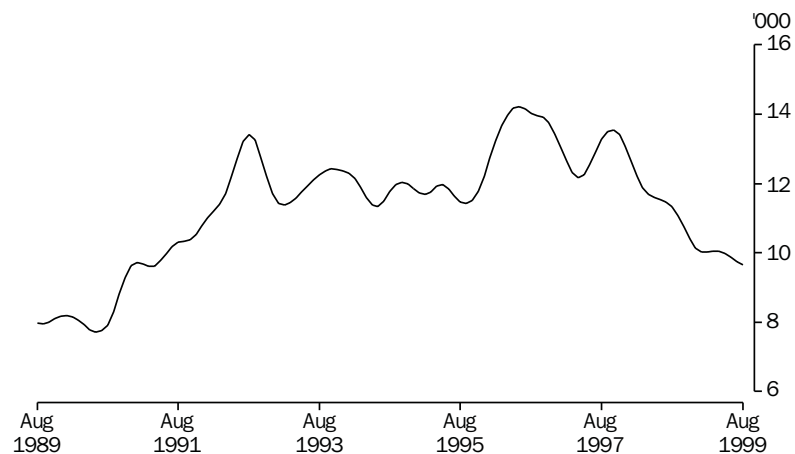
SUMMARY OF FINDINGS ACT

TREND ESTIMATES

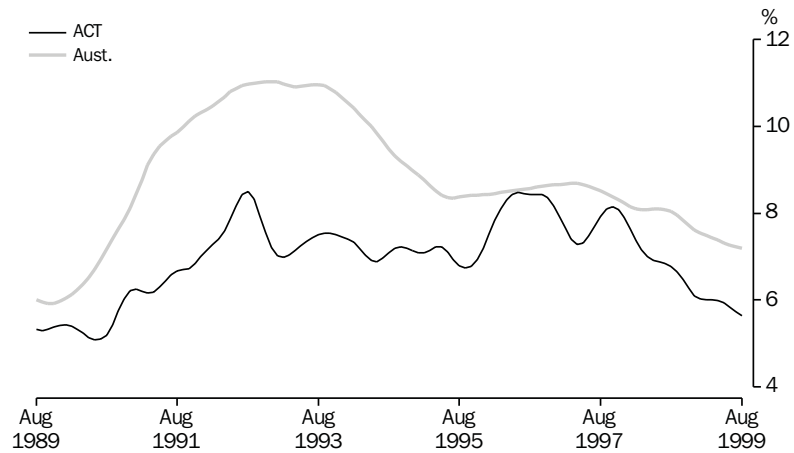
Employed persons Despite the fluctuations of the past two and a half years, the trend estimate of employed persons in the ACT has been rising since October 1998 and in August 1999 was 161,100.



Unemployed persons Trend unemployment in the ACT fell from a peak of 14,200 in mid-1996 to 12,500 in mid-1997 before rising to 13,500 in October 1997. The trend estimate of unemployed persons has since fallen to 9,600 in August 1999.



Unemployment rate The trend unemployment rate in the ACT has fallen steadily from 8.1% in October 1997 to 5.6% in August 1999.



Participation rate and labour force The ACT trend participation rate has been between 71.0% and 72.0% over the past year and at August 1999 was 72.0%. The trend labour force estimate was 170,800 in August 1999.

INDUSTRY AND OCCUPATION

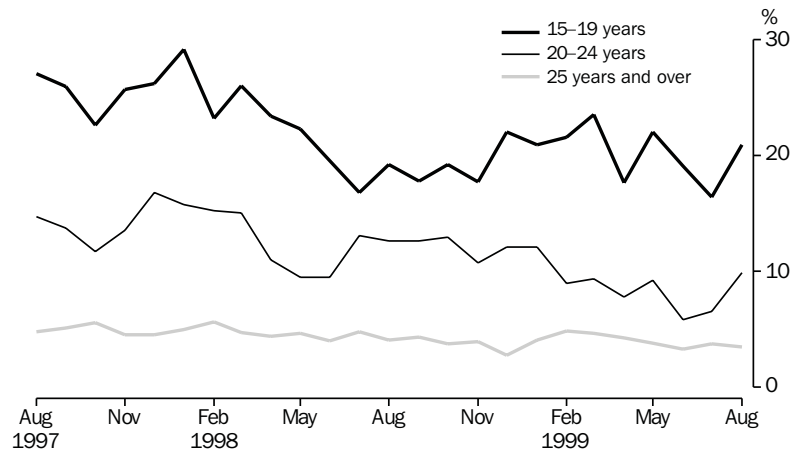
There was an average of 39,900 people employed in Government administration and defence in the ACT for the year ending August 1999, an increase of 4,600 on the average for the previous year. This industry accounted for approximately a quarter of total employment in August 1999. Retail trade accounted for a further 13.9% of total employment and Property and business services 13.8%.

The largest occupation group was Professionals which had an average of 38,200 employed people, 24.2% of the total number of employed.

AGE

The proportion of employed people working part-time ranged from 72.9% of 15–19 year olds to 20.9% of those aged 25 years and over. The unemployment rates for these groups was 20.9% and 3.5%, respectively.

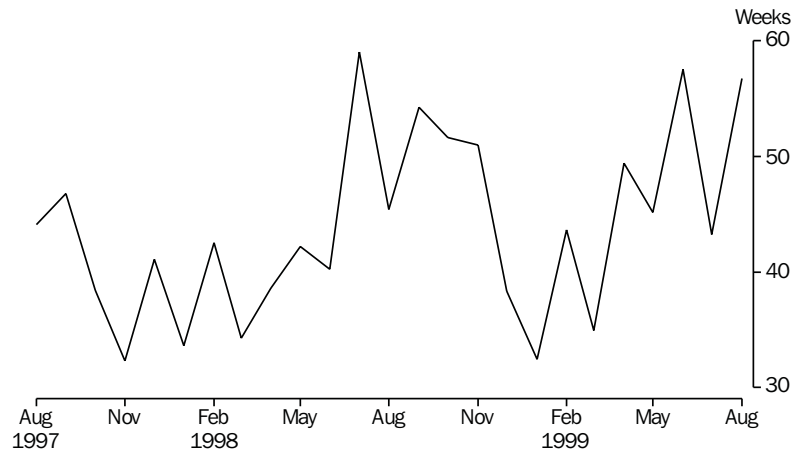
Unemployment rate by age



DURATION OF UNEMPLOYMENT

Average duration of unemployment in the ACT was 57 weeks in August 1999. The average has been between 32 and 58 weeks over the past year.

Average duration of unemployment



LIST OF TABLES AND GRAPHS

NEW SOUTH WALES		Page
Tables	Labour force status:	
	1 Original series	13
	2 Seasonally adjusted and trend series	14
	3 Age, August 1999	16
	4 Persons aged 15–24 by full-time educational attendance, August 1999	17
	5 Family status, August 1999	18
Graphs	Labour force status:	
	Trend series, August 1989–August 1999:	
	Employed males	15
	Employed females	15
	Unemployed males	15
	Unemployed females	15
	Male unemployment rate	15
	Female unemployment rate	15
	Male participation rate	15
	Female participation rate	15
Tables	Employed persons:	
	6 Status in employment	18
	7 Age	19
	8 Industry, August 1998 and August 1999	20
	9 Occupation, August 1998 and August 1999	22
Graphs	Employed persons:	
	Annual change in employment by age, August 1998–August 1999	19
	Annual change in employment by industry division, August 1998–August 1999	21
	Annual change in employment by occupation group, August 1998–August 1999	23
Tables	Unemployed persons:	
	10 Age	24
	11 Unemployment rate by age	24
	12 Industry and occupation of last full-time job, August 1999	25
	13 Duration of unemployment	26
	14 Unemployment rate by birthplace and period of arrival	26
	15 Duration of unemployment by age	27
Graphs	Unemployment rate:	
	Unemployment rate by age, August 1997–August 1999	25
	Unemployment rate by period of arrival of overseas born, August 1999	26

Tables	Regional data:	
	Labour force status	
	16 Sydney Major Statistical Region	28
	17 Balance of NSW Major Statistical Region	29
	Employed persons:	
	18 Industry and occupation, Sydney Major Statistical Region and Balance of NSW Major Statistical Region, August 1999	30
	19 Labour force status of regions of NSW and ACT	31
AUSTRALIAN CAPITAL TERRITORY		
Tables	Labour force status:	
	20 Original series	39
	21 Trend series	40
	22 Age, August 1999	42
	23 Non-institutionalised persons, birthplace and year of arrival, August 1999	42
Graphs	Labour force status:	
	Trend series, August 1989–August 1999	
	Employed males	41
	Employed females	41
	Unemployed males	41
	Unemployed females	41
	Male unemployment rate	41
	Female unemployment rate	41
	Male participation rate	41
	Female participation rate	41
Tables	Employed persons:	
	24 Industry, average for year ending August 1998 and August 1999	43
	25 Occupation, average for year ending August 1998 and August 1999	44
	Unemployed persons:	
	26 Long-term unemployment	45
Graphs	Employed persons:	
	Average employment by industry division, year ending August 1998 and May 1999	43
	Average employment by occupation group, year ending August 1998 and May 1999	44
	Unemployed persons:	
	Long-term unemployed as a proportion of total unemployed, March 1998–August 1999	45

TABLE 1. LABOUR FORCE STATUS: ORIGINAL SERIES, NSW

Month	Employed			Unemployed			Labour force ('000)	Not in labour force ('000)	Civilian population aged 15 and over ('000)	Unemployment rate (per cent)	Participation rate (per cent)
	Full-time workers ('000)	Part-time workers ('000)	Total ('000)	Looking for full-time work ('000)	Looking for part-time work ('000)	Total ('000)					
MALES											
August—											
1995	1,403.8	167.5	1,571.3	121.8	12.1	133.9	1,705.1	658.4	2,363.5	7.9	72.1
1996	1,401.1	184.9	1,586.0	127.6	19.1	146.7	1,732.7	663.3	2,396.0	8.5	72.3
1997	1,390.1	177.1	1,567.2	118.7	14.9	133.6	1,700.7	727.2	2,428.0	7.9	70.0
1998—											
June	1,444.7	181.5	1,626.2	116.7	17.1	133.8	1,760.0	697.0	2,457.0	7.6	71.6
July	1,465.0	176.5	1,641.6	114.2	12.5	126.6	1,768.2	691.5	2,459.7	7.2	71.9
August	1,424.3	175.1	1,599.4	115.5	19.2	134.6	1,734.1	728.4	2,462.4	7.8	70.4
1999—											
May	1,460.0	202.6	1,662.7	93.3	16.8	110.1	1,772.8	717.2	2,490.0	6.2	71.2
June	1,459.4	208.6	1,668.1	91.6	16.4	108.0	1,776.1	717.3	2,493.4	6.1	71.2
July	1,491.8	195.6	1,687.4	83.2	18.1	101.3	1,788.7	707.7	2,496.4	5.7	71.7
August	1,464.1	198.4	1,662.5	95.9	19.4	115.3	1,777.8	721.6	2,499.4	6.5	71.1
MARRIED FEMALES											
August—											
1995	410.9	312.2	723.1	25.3	11.8	37.1	760.2	643.0	1,403.2	4.9	54.2
1996	402.2	315.5	717.7	22.4	14.1	36.5	754.2	666.9	1,421.1	4.8	53.1
1997	398.4	312.3	710.8	25.1	11.2	36.3	747.1	673.4	1,420.5	4.9	52.6
1998—											
June	407.6	337.0	744.6	20.4	13.6	34.1	778.7	669.9	1,448.5	4.4	53.8
July	431.3	320.0	751.3	22.3	12.1	34.3	785.6	654.8	1,440.4	4.4	54.5
August	407.3	322.2	729.5	24.5	10.4	34.9	764.4	672.7	1,437.0	4.6	53.2
1999—											
May	399.2	335.8	735.0	18.6	13.6	32.2	767.2	695.9	1,463.1	4.2	52.4
June	418.1	333.6	751.7	19.0	10.9	29.9	781.6	673.4	1,455.0	3.8	53.7
July	416.2	330.2	746.4	18.8	8.2	27.1	773.4	686.0	1,459.5	3.5	53.0
August	406.9	325.1	731.9	22.4	10.8	33.3	765.2	700.2	1,465.4	4.3	52.2
ALL FEMALES											
August—											
1995	710.2	472.8	1,182.9	59.7	32.4	92.1	1,275.0	1,175.3	2,450.3	7.2	52.0
1996	722.5	472.7	1,195.2	59.4	30.1	89.5	1,284.7	1,202.6	2,487.4	7.0	51.6
1997	705.2	479.3	1,184.5	64.5	27.4	92.0	1,276.5	1,242.8	2,519.3	7.2	50.7
1998—											
June	730.2	515.6	1,245.8	57.1	31.2	88.3	1,334.1	1,211.8	2,545.9	6.6	52.4
July	765.8	493.2	1,259.0	59.7	28.5	88.2	1,347.2	1,201.3	2,548.5	6.5	52.9
August	724.7	495.8	1,220.6	62.4	22.6	85.0	1,305.5	1,245.5	2,551.1	6.5	51.2
1999—											
May	729.5	520.7	1,250.2	56.8	33.2	90.0	1,340.3	1,235.9	2,576.1	6.7	52.0
June	746.9	517.7	1,264.6	52.3	29.2	81.5	1,346.2	1,232.9	2,579.1	6.1	52.2
July	754.9	510.8	1,265.7	53.2	23.3	76.5	1,342.2	1,239.8	2,582.0	5.7	52.0
August	723.4	513.6	1,237.1	54.9	31.8	86.7	1,323.8	1,261.2	2,584.9	6.5	51.2
PERSONS											
August—											
1995	2,114.0	640.2	2,754.2	181.5	44.5	226.0	2,980.2	1,833.7	4,813.8	7.6	61.9
1996	2,123.6	657.5	2,781.2	187.0	49.3	236.2	3,017.4	1,865.9	4,883.3	7.8	61.8
1997	2,095.3	656.4	2,751.7	183.2	42.4	225.6	2,977.2	1,970.0	4,947.2	7.6	60.2
1998—											
June	2,174.8	697.1	2,872.0	173.8	48.3	222.1	3,094.1	1,908.8	5,002.9	7.2	61.8
July	2,230.8	669.7	2,900.5	173.8	41.0	214.8	3,115.3	1,892.8	5,008.2	6.9	62.2
August	2,149.1	670.9	2,820.0	177.9	41.7	219.6	3,039.6	1,973.9	5,013.5	7.2	60.6
1999—											
May	2,189.6	723.3	2,912.9	150.2	50.0	200.2	3,113.1	1,953.1	5,066.1	6.4	61.4
June	2,206.3	726.4	2,932.7	143.9	45.7	189.6	3,122.3	1,950.3	5,072.5	6.1	61.6
July	2,246.7	706.4	2,953.2	136.4	41.4	177.8	3,131.0	1,947.5	5,078.5	5.7	61.7
August	2,187.6	712.1	2,899.6	150.8	51.2	202.0	3,101.6	1,982.8	5,084.4	6.5	61.0

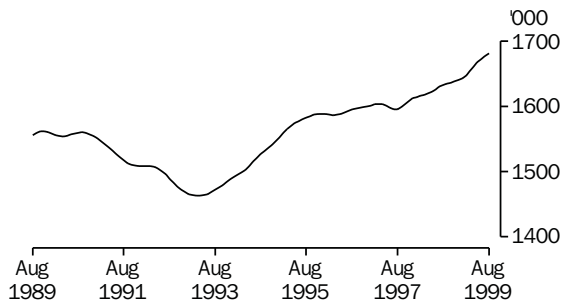
TABLE 2. LABOUR FORCE STATUS: SEASONALLY ADJUSTED AND TREND SERIES, NSW

Month	Seasonally adjusted series					Trend series (a)				
	Employed ('000)	Unemp-loyed ('000)	Labour force ('000)	Unemp-loyment rate (per cent)	Partici-pation rate (per cent)	Employed ('000)	Unemp-loyed ('000)	Labour force ('000)	Unemp-loyment rate (per cent)	Partici-pation rate (per cent)
MALES										
August—										
1995	1,583.0	137.9	1,721.0	8.0	72.8	1,583.1	138.7	1,721.8	8.1	72.8
1996	1,598.8	151.0	1,749.7	8.6	73.0	1,595.6	142.5	1,738.1	8.2	72.5
1997	1,580.3	137.0	1,717.3	8.0	70.7	1,596.0	142.1	1,738.1	8.2	71.6
1998—										
June	1,629.4	136.8	1,766.2	7.7	71.9	1,626.3	134.5	1,760.8	7.6	71.7
July	1,639.0	135.0	1,774.0	7.6	72.1	1,630.0	133.9	1,764.0	7.6	71.7
August	1,613.4	137.7	1,751.1	7.9	71.1	1,633.2	132.4	1,765.6	7.5	71.7
September	1,639.4	130.8	1,770.2	7.4	71.8	1,635.2	130.4	1,765.5	7.4	71.6
October	1,652.8	115.0	1,767.8	6.5	71.6	1,636.7	128.3	1,765.0	7.3	71.5
November	1,634.9	133.4	1,768.3	7.5	71.5	1,638.3	126.7	1,764.9	7.2	71.4
December	1,635.5	124.0	1,759.5	7.0	71.1	1,640.4	125.8	1,766.2	7.1	71.4
1999—										
January	1,635.3	129.6	1,764.9	7.3	71.2	1,643.6	125.0	1,768.6	7.1	71.4
February	1,648.1	121.2	1,769.3	6.8	71.3	1,648.2	123.3	1,771.5	7.0	71.4
March	1,665.8	121.3	1,787.1	6.8	72.0	1,654.2	120.4	1,774.5	6.8	71.5
April	1,656.7	119.5	1,776.3	6.7	71.4	1,661.3	117.0	1,778.3	6.6	71.5
May	1,666.2	112.4	1,778.6	6.3	71.4	1,667.7	114.5	1,782.2	6.4	71.6
June	1,671.3	110.5	1,781.8	6.2	71.5	1,672.9	113.4	1,786.3	6.3	71.6
July	1,685.0	108.0	1,793.0	6.0	71.8	1,677.5	113.5	1,791.0	6.3	71.7
August	1,677.3	117.8	1,795.1	6.6	71.8	1,681.4	114.4	1,795.8	6.4	71.9
FEMALES										
August—										
1995	1,196.4	99.7	1,296.1	7.7	52.9	1,197.0	90.6	1,287.6	7.0	52.5
1996	1,210.0	97.5	1,307.6	7.5	52.6	1,202.1	97.8	1,299.9	7.5	52.3
1997	1,200.9	100.6	1,301.5	7.7	51.7	1,201.0	98.7	1,299.7	7.6	51.6
1998—										
June	1,239.4	96.7	1,336.0	7.2	52.5	1,238.4	95.0	1,333.4	7.1	52.4
July	1,251.0	95.9	1,346.9	7.1	52.8	1,243.1	95.5	1,338.6	7.1	52.5
August	1,238.6	93.1	1,331.6	7.0	52.2	1,245.5	96.0	1,341.5	7.2	52.6
September	1,255.6	96.5	1,352.1	7.1	52.9	1,246.5	95.7	1,342.2	7.1	52.6
October	1,251.8	92.2	1,344.0	6.9	52.6	1,246.9	94.7	1,341.6	7.1	52.5
November	1,224.5	104.7	1,329.2	7.9	51.9	1,246.9	93.3	1,340.2	7.0	52.4
December	1,255.9	87.5	1,343.4	6.5	52.4	1,246.8	92.2	1,339.0	6.9	52.3
1999—										
January	1,249.3	85.6	1,334.9	6.4	52.0	1,246.9	91.8	1,338.7	6.9	52.2
February	1,257.9	87.5	1,345.3	6.5	52.4	1,247.4	91.8	1,339.1	6.9	52.2
March	1,237.7	98.5	1,336.2	7.4	52.0	1,248.1	91.8	1,339.8	6.9	52.1
April	1,244.3	96.6	1,340.9	7.2	52.1	1,249.3	91.8	1,341.1	6.8	52.1
May	1,252.5	91.1	1,343.6	6.8	52.2	1,250.9	91.7	1,342.6	6.8	52.1
June	1,257.8	89.5	1,347.4	6.6	52.2	1,253.6	91.3	1,344.9	6.8	52.1
July	1,257.4	83.3	1,340.7	6.2	51.9	1,256.7	91.1	1,347.9	6.8	52.2
August	1,255.9	95.0	1,350.9	7.0	52.3	1,259.5	91.5	1,350.9	6.8	52.3
PERSONS										
August—										
1995	2,779.4	237.6	3,017.1	7.9	62.7	2,780.1	229.3	3,009.3	7.6	62.5
1996	2,808.8	248.5	3,057.3	8.1	62.6	2,797.7	240.3	3,038.0	7.9	62.2
1997	2,781.3	237.6	3,018.8	7.9	61.0	2,797.0	240.8	3,037.8	7.9	61.4
1998—										
June	2,868.8	233.5	3,102.3	7.5	62.0	2,864.6	229.6	3,094.2	7.4	61.8
July	2,890.0	230.9	3,120.9	7.4	62.3	2,873.1	229.4	3,102.6	7.4	62.0
August	2,851.9	230.8	3,082.7	7.5	61.5	2,878.7	228.4	3,107.1	7.3	62.0
September	2,895.0	227.3	3,122.3	7.3	62.2	2,881.7	226.1	3,107.8	7.3	61.9
October	2,904.6	207.2	3,111.8	6.7	61.9	2,883.6	222.9	3,106.6	7.2	61.8
November	2,859.4	238.2	3,097.6	7.7	61.6	2,885.2	220.0	3,105.2	7.1	61.7
December	2,891.5	211.5	3,102.9	6.8	61.6	2,887.2	218.0	3,105.2	7.0	61.6
1999—										
January	2,884.6	215.2	3,099.8	6.9	61.5	2,890.5	216.8	3,107.3	7.0	61.6
February	2,906.0	208.7	3,114.7	6.7	61.7	2,895.6	215.0	3,110.6	6.9	61.6
March	2,903.5	219.8	3,123.3	7.0	61.8	2,902.2	212.1	3,114.4	6.8	61.6
April	2,901.0	216.1	3,117.1	6.9	61.6	2,910.6	208.8	3,119.4	6.7	61.7
May	2,918.7	203.5	3,122.2	6.5	61.6	2,918.6	206.2	3,124.8	6.6	61.7
June	2,929.1	200.0	3,129.1	6.4	61.7	2,926.5	204.8	3,131.3	6.5	61.7
July	2,942.5	191.3	3,133.8	6.1	61.7	2,934.2	204.6	3,138.8	6.5	61.8
August	2,933.2	212.8	3,145.9	6.8	61.9	2,940.9	205.9	3,146.8	6.5	61.9

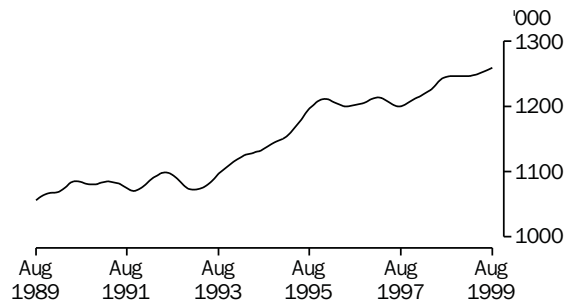
(a) See Explanatory Notes 29 and 30.

TREND SERIES, NSW(a)

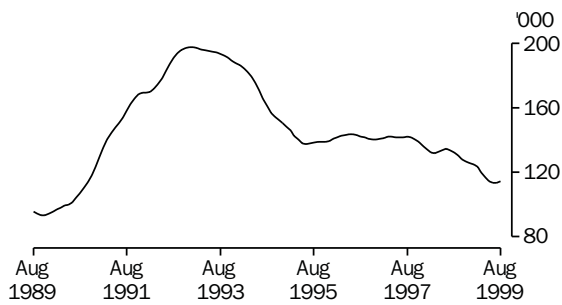
EMPLOYED MALES



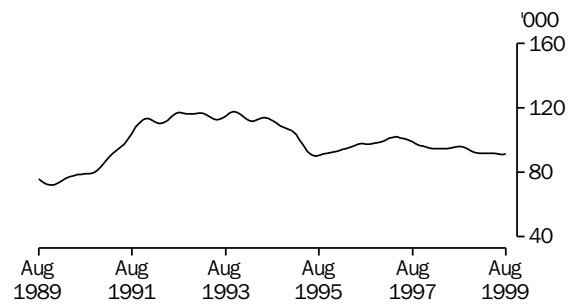
EMPLOYED FEMALES



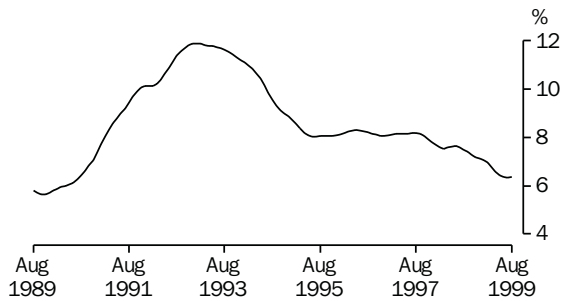
UNEMPLOYED MALES



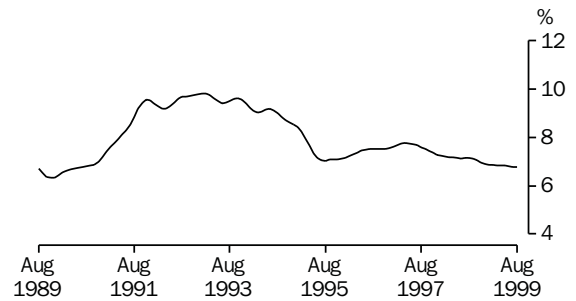
UNEMPLOYED FEMALES



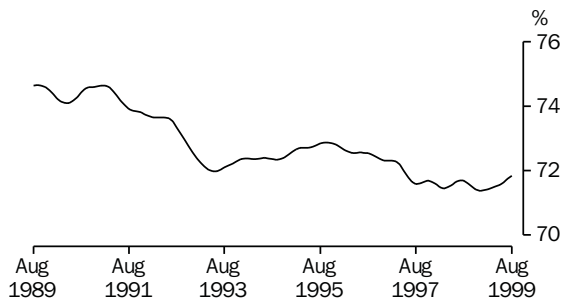
MALE UNEMPLOYMENT RATE



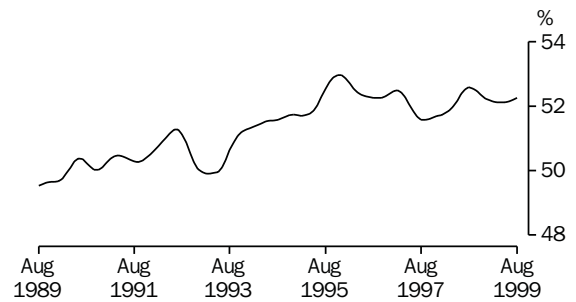
FEMALE UNEMPLOYMENT RATE



MALE PARTICIPATION RATE



FEMALE PARTICIPATION RATE



(a) Comparisons between these graphs should not be made, as their vertical axes are not similarly scaled.

TABLE 3. LABOUR FORCE STATUS: AGE, NSW, AUGUST 1999

Age group (years)	Employed		Unemployed			Labour force (<i>'000</i>)	Not in labour force (<i>'000</i>)	Civilian population aged 15 and over (<i>'000</i>)	Unemp- loyment rate (per cent)	Partici- pation rate (per cent)	
	Full-time workers (<i>'000</i>)	Part-time workers (<i>'000</i>)	Total (<i>'000</i>)	Looking for full- time work (<i>'000</i>)	Looking for part- time work (<i>'000</i>)						Total (<i>'000</i>)
MALES											
15-19	46.9	50.9	97.8	9.0	9.7	18.7	116.5	109.6	226.1	16.1	51.5
20-24	138.4	31.3	169.7	18.3	* 5.6	23.9	193.6	29.6	223.2	12.4	86.7
25-34	389.8	26.2	416.0	26.0	* 1.6	27.6	443.6	34.1	477.7	6.2	92.9
35-44	396.8	27.1	424.0	22.2	* 0.3	22.5	446.5	46.9	493.5	5.0	90.5
45-54	330.4	28.2	358.6	10.3	* 0.7	11.0	369.7	60.6	430.3	3.0	85.9
55-59	100.7	8.0	108.7	* 5.8	* 1.5	7.3	116.0	44.3	160.3	6.3	72.4
60-64	45.0	14.9	59.9	* 4.1	* 0.0	* 4.1	64.0	67.4	131.4	* 6.5	48.7
65 and over	16.1	11.8	28.0	* 0.0	* 0.0	* 0.0	28.0	329.0	357.0	* 0.0	7.8
Total	1,464.1	198.4	1,662.6	95.9	19.4	115.3	1,777.8	721.6	2,499.4	6.5	71.1
MARRIED FEMALES											
15-19	* 1.2	* 1.1	* 2.2	* 1.8	* 0.0	* 1.8	* 4.0	* 2.0	6.0	* 44.1	* 66.4
20-24	22.2	10.1	32.2	* 2.5	* 0.4	* 2.9	35.1	15.6	50.7	* 8.2	69.3
25-34	113.3	70.4	183.7	6.7	* 2.8	9.5	193.2	117.0	310.2	4.9	62.3
35-44	125.9	113.2	239.1	7.2	* 4.3	11.5	250.6	113.3	363.9	4.6	68.9
45-54	117.4	89.0	206.5	* 2.7	* 2.3	* 5.0	211.5	109.4	320.9	* 2.4	65.9
55-59	19.6	25.6	45.2	* 1.6	* 0.6	* 2.2	47.4	67.6	115.1	* 4.7	41.2
60-64	6.1	9.7	15.8	* 0.0	* 0.3	* 0.3	16.1	77.4	93.5	* 2.1	17.3
65 and over	* 1.2	6.0	7.2	* 0.0	* 0.0	* 0.0	7.2	197.9	205.1	* 0.0	3.5
Total	406.9	325.1	731.9	22.4	10.8	33.3	765.2	700.2	1,465.4	4.3	52.2
ALL FEMALES											
15-19	22.3	69.0	91.3	7.8	9.5	17.3	108.6	106.7	215.3	15.9	50.5
20-24	104.9	44.1	149.0	11.1	* 3.9	15.0	164.0	54.8	218.8	9.1	74.9
25-34	209.2	98.2	307.4	13.2	* 4.9	18.1	325.6	160.9	486.5	5.6	66.9
35-44	183.2	137.0	320.2	13.3	8.1	21.4	341.7	152.8	494.4	6.3	69.1
45-54	162.4	109.9	272.2	6.3	* 4.0	10.3	282.6	138.9	421.5	3.7	67.0
55-59	29.4	31.2	60.7	* 2.9	* 0.6	* 3.5	64.2	91.2	155.4	* 5.5	41.3
60-64	9.5	14.1	23.6	* 0.0	* 0.7	* 0.7	24.3	107.8	132.1	* 2.8	18.4
65 and over	* 2.5	10.0	12.6	* 0.3	* 0.0	* 0.3	12.9	448.0	460.9	* 2.3	2.8
Total	723.4	513.6	1,237.1	54.9	31.8	86.7	1,323.8	1,261.2	2,584.9	6.5	51.2
PERSONS											
15-19	69.2	119.9	189.1	16.8	19.2	36.0	225.1	216.3	441.4	16.0	51.0
20-24	243.3	75.4	318.6	29.4	9.5	38.9	357.6	84.4	442.0	10.9	80.9
25-34	599.0	124.3	723.4	39.3	6.5	45.8	769.2	195.0	964.2	5.9	79.8
35-44	580.0	164.2	744.2	35.5	8.4	44.0	788.2	199.7	987.9	5.6	79.8
45-54	492.8	138.1	630.8	16.7	* 4.7	21.4	652.2	199.6	851.8	3.3	76.6
55-59	130.2	39.2	169.4	8.7	* 2.1	10.8	180.2	135.5	315.7	6.0	57.1
60-64	54.5	29.0	83.5	* 4.1	* 0.7	* 4.8	88.3	175.2	263.5	* 5.5	33.5
65 and over	18.6	21.9	40.5	* 0.3	* 0.0	* 0.3	40.8	777.1	817.9	* 0.7	5.0
Total	2,187.6	712.1	2,899.6	150.8	51.2	202.0	3,101.6	1,982.8	5,084.4	6.5	61.0

TABLE 4. LABOUR FORCE STATUS: PERSONS AGED 15-24 BY FULL-TIME EDUCATIONAL ATTENDANCE, NSW, AUGUST 1999

Age (years)	Employed			Unemployed			Labour force ('000)	Not in labour force ('000)	Civilian population aged 15 and over ('000)	Unemployment rate (per cent)	Participation rate (per cent)
	Full-time workers ('000)	Part-time workers ('000)	Total ('000)	Looking for full-time work ('000)	Looking for part-time work ('000)	Total ('000)					
ATTENDING SCHOOL OR A TERTIARY EDUCATIONAL INSTITUTION FULL-TIME											
15-19	* 1.5	100.3	101.8	* 2.1	17.7	19.8	121.6	199.5	321.1	16.3	37.9
15	* 0.0	16.7	16.7	* 0.3	6.8	7.1	23.8	61.9	85.7	29.9	27.8
16	* 0.0	23.2	23.2	* 0.3	* 4.2	* 4.5	27.7	48.8	76.5	* 16.1	36.2
17	* 0.3	24.3	24.7	* 0.3	* 1.6	* 1.9	26.6	43.2	69.8	* 7.3	38.1
18	* 0.3	20.0	20.3	* 0.6	* 4.2	* 4.8	25.1	25.0	50.1	* 19.2	50.1
19	* 0.9	16.1	17.0	* 0.5	* 1.0	* 1.5	18.5	20.7	39.1	* 8.2	47.2
20-24	* 3.0	35.1	38.1	* 0.8	7.4	8.3	46.4	38.8	85.2	17.8	54.5
20	* 0.0	10.2	10.2	* 0.0	* 4.1	* 4.1	14.3	10.8	25.1	* 28.6	56.9
21	* 0.8	15.8	16.5	* 0.0	* 1.5	* 1.5	18.0	9.1	27.1	* 8.3	66.5
22	* 0.7	* 4.1	* 4.8	* 0.4	* 1.1	* 1.5	6.3	8.9	15.2	* 23.6	41.7
23	* 0.4	* 2.8	* 3.2	* 0.0	* 0.4	* 0.4	* 3.6	* 4.8	8.5	* 11.1	* 43.0
24	* 1.1	* 2.2	* 3.3	* 0.4	* 0.4	* 0.8	* 4.1	* 5.2	9.3	* 19.3	* 44.2
Total aged 15-24	* 4.5	135.4	139.9	* 2.9	25.2	28.1	168.0	238.3	406.3	16.7	41.4
NOT ATTENDING SCHOOL OR A TERTIARY EDUCATIONAL INSTITUTION FULL-TIME (a)											
15-19	67.7	19.6	87.3	14.7	* 1.5	16.2	103.5	16.8	120.3	15.6	86.1
15	* 1.0	* 0.7	* 1.7	* 0.0	* 0.0	* 0.0	* 1.7	* 0.7	* 2.4	* 0.0	* 71.5
16	* 4.4	* 2.8	7.2	* 1.9	* 0.7	* 2.6	9.8	* 2.5	12.3	* 26.3	79.8
17	10.6	* 3.0	13.6	* 2.7	* 0.5	* 3.2	16.8	* 2.0	18.8	* 19.0	89.4
18	21.9	* 4.8	26.7	6.3	* 0.3	6.6	33.4	* 5.0	38.4	19.9	86.9
19	29.7	8.3	38.0	* 3.8	* 0.0	* 3.8	41.8	6.6	48.4	* 9.1	86.4
20-24	240.3	40.3	280.5	28.6	* 2.1	30.7	311.2	45.6	356.8	9.9	87.2
20	39.0	7.4	46.4	7.5	* 0.4	7.8	54.2	7.9	62.1	14.4	87.2
21	40.4	* 4.9	45.2	8.1	* 0.0	8.1	53.3	6.1	59.4	15.2	89.7
22	47.5	7.5	54.9	* 4.5	* 0.4	* 4.9	59.8	12.3	72.1	* 8.2	83.0
23	59.5	7.3	66.7	* 3.2	* 0.4	* 3.6	70.3	10.2	80.5	* 5.1	87.3
24	54.0	13.3	67.3	* 5.4	* 0.9	6.3	73.5	9.1	82.7	8.5	89.0
Total aged 15-24	307.9	59.9	367.8	43.3	* 3.6	46.8	414.7	62.4	477.1	11.3	86.9
TOTAL											
15-19	69.2	119.9	189.1	16.8	19.2	36.0	225.1	216.3	441.4	16.0	51.0
15	* 1.0	17.4	18.4	* 0.3	6.8	7.1	25.5	62.6	88.1	27.9	29.0
16	* 4.4	26.1	30.5	* 2.2	* 4.8	7.0	37.5	51.3	88.8	18.8	42.2
17	11.0	27.3	38.3	* 3.0	* 2.1	* 5.1	43.4	45.2	88.6	* 11.8	49.0
18	22.2	24.8	47.0	7.0	* 4.5	11.4	58.4	30.0	88.5	19.6	66.1
19	30.6	24.4	54.9	* 4.3	* 1.0	* 5.3	60.3	27.2	87.5	* 8.8	68.9
20-24	243.3	75.4	318.6	29.4	9.5	38.9	357.6	84.4	442.0	10.9	80.9
20	39.0	17.6	56.6	7.5	* 4.5	11.9	68.5	18.8	87.2	17.4	78.5
21	41.1	20.7	61.8	8.1	* 1.5	9.6	71.4	15.2	86.6	13.4	82.4
22	48.2	11.6	59.7	* 4.9	* 1.5	6.4	66.1	21.1	87.3	9.7	75.8
23	59.9	10.1	70.0	* 3.2	* 0.8	* 4.0	73.9	15.0	88.9	* 5.4	83.1
24	55.1	15.5	70.6	* 5.8	* 1.3	7.1	77.6	14.3	92.0	9.1	84.4
Total aged 15-24	312.4	195.3	507.7	46.2	28.8	74.9	582.7	300.7	883.4	12.9	66.0

(a) Includes institutionalised persons.

TABLE 5. LABOUR FORCE STATUS: FAMILY STATUS, NSW, AUGUST 1999

Family status	Employed			Unemployed			Labour force ('000)	Not in labour force ('000)	Civilian population aged 15 and over ('000)	Unemployment rate (per cent)	Participation rate (per cent)
	Full-time workers ('000)	Part-time workers ('000)	Total ('000)	Looking for full-time work ('000)	Looking for part-time work ('000)	Total ('000)					
<i>Member of a family</i>	1,732.9	610.6	2,343.5	116.4	40.1	156.5	2,500.0	1,467.0	3,967.1	6.3	63.0
Husband	950.4	77.6	1,028.0	37.3	* 1.4	38.7	1,066.7	367.8	1,434.5	3.6	74.4
With children aged 0-14 present	497.1	31.3	528.5	22.7	* 0.7	23.4	551.9	43.8	595.7	4.2	92.7
Without children aged 0-14 present	453.2	46.3	499.5	14.5	* 0.7	15.2	514.8	324.1	838.8	3.0	61.4
With dependants present	577.6	39.7	617.2	24.9	* 0.7	25.6	642.9	56.0	698.9	4.0	92.0
Without dependants present	372.8	38.0	410.8	12.3	* 0.7	13.0	423.8	311.8	735.6	3.1	57.6
Wife	389.9	315.2	705.1	22.0	10.5	32.5	737.6	660.4	1,398.1	4.4	52.8
With children aged 0-14 present	135.1	176.8	312.0	11.3	6.8	18.1	330.0	235.4	565.4	5.5	58.4
Without children aged 0-14 present	254.8	138.4	393.2	10.7	* 3.7	14.5	407.6	425.1	832.7	3.5	49.0
With dependants present	174.9	203.0	377.9	12.3	7.8	20.1	398.0	266.4	664.4	5.1	59.9
Without dependants present	215.0	112.2	327.2	9.7	* 2.7	12.4	339.6	394.1	733.7	3.7	46.3
Not-married male family head	23.6	* 2.8	26.4	* 2.5	* 0.4	* 2.9	29.3	18.0	47.2	* 9.9	62.0
With children aged 0-14 present	6.2	* 1.4	7.5	* 1.1	* 0.0	* 1.1	8.7	* 5.8	14.4	* 13.1	60.1
Without children aged 0-14 present	17.4	* 1.4	18.8	* 1.4	* 0.4	* 1.8	20.6	12.2	32.8	* 8.6	62.8
With dependants present	12.5	* 2.4	14.9	* 1.5	* 0.4	* 1.9	16.8	6.8	23.6	* 11.2	71.0
Without dependants present	11.1	* 0.3	11.5	* 1.0	* 0.0	* 1.0	12.5	11.1	23.6	* 8.2	52.9
Not-married female family head	48.9	41.3	90.2	10.6	6.4	17.0	107.2	132.0	239.2	15.9	44.8
With children aged 0-14 present	20.8	31.8	52.6	6.9	* 5.4	12.3	64.9	74.9	139.9	19.0	46.4
Without children aged 0-14 present	28.1	9.5	37.6	* 3.7	* 1.0	* 4.7	42.3	57.1	99.4	* 11.2	42.6
With dependants present	32.3	36.7	69.0	8.3	6.1	14.4	83.4	82.6	165.9	17.2	50.2
Without dependants present	16.6	* 4.6	21.2	* 2.3	* 0.3	* 2.7	23.9	49.4	73.3	* 11.2	32.5
Full-time student aged 15-24 (a)	* 2.6	116.3	118.9	* 2.0	18.4	20.3	139.2	193.5	332.8	14.6	41.8
Other child of family head	302.3	53.6	355.9	36.6	* 2.7	39.3	395.2	51.4	446.5	9.9	88.5
Other relative of family head	15.3	* 3.8	19.0	* 5.4	* 0.3	* 5.8	24.8	43.9	68.7	* 23.3	36.1
<i>Not a member of a family</i>	365.7	74.1	439.8	28.8	6.8	35.6	475.4	338.8	814.2	7.5	58.4
Living alone	190.5	42.6	233.1	17.9	* 3.3	21.2	254.3	282.2	536.5	8.3	47.4
Not living alone	175.2	31.5	206.7	10.9	* 3.5	14.4	221.1	56.6	277.7	6.5	79.6
<i>Not family coded</i>	88.9	27.4	116.3	* 5.6	* 4.3	9.9	126.2	176.9	303.1	7.8	41.6
Total	2,187.6	712.1	2,899.6	150.8	51.2	202.0	3,101.6	1,982.8	5,084.4	6.5	61.0

(a) Excludes persons aged 20-24 attending school.

TABLE 6. EMPLOYED PERSONS: STATUS IN EMPLOYMENT (a), NSW ('000)

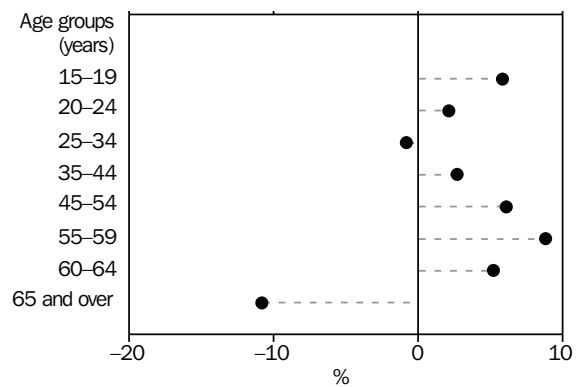
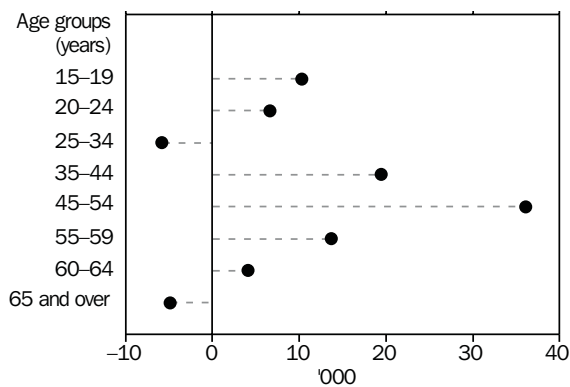
Status in employment	Males			Females			Persons		
	August 1998	May 1999	August 1999	August 1998	May 1999	August 1999	August 1998	May 1999	August 1999
Employees	1,332.5	1,399.7	1,366.4	1,097.5	1,132.3	1,103.7	2,430.0	2,532.0	2,470.1
Employers	78.4	74.9	82.0	32.1	33.7	33.2	110.5	108.6	115.2
Own account workers	183.0	179.5	203.5	79.9	71.0	84.2	262.9	250.5	287.7
Total employed (b)	1,599.4	1,662.7	1,662.6	1,220.6	1,250.2	1,237.1	2,820.0	2,912.9	2,899.6

(a) Status in Employment replaces the previous term Status of Worker. No definitional changes have been made - the only changes are to the classification titles. (b) Includes contributing family workers.

**TABLE 7. EMPLOYED PERSONS: AGE, NSW
(’000)**

Month	Age group (years)								Total employed
	15 19	20 24	25 34	35 44	45 54	55 59	60 64	65 and over	
MALES									
1998—									
August	86.1	166.3	412.7	417.4	331.3	102.7	52.1	30.8	1,599.4
1999—									
May	102.8	174.2	413.9	425.2	353.2	106.3	55.3	31.8	1,662.7
June	101.0	175.8	411.1	428.0	358.4	105.9	57.4	30.5	1,668.1
July	107.2	176.0	416.7	429.7	361.2	105.3	62.0	29.3	1,687.4
August	97.8	169.7	416.0	424.0	358.6	108.7	59.9	28.0	1,662.6
MARRIED FEMALES									
1998—									
August	* 1.7	32.7	195.2	231.8	205.4	36.4	17.8	8.4	729.5
1999—									
May	* 3.0	30.0	183.0	248.2	201.2	48.5	14.0	7.1	735.0
June	* 3.6	31.1	183.0	250.8	210.6	47.5	17.4	7.6	751.7
July	* 2.7	31.9	182.0	247.6	208.3	48.1	18.5	7.4	746.4
August	* 2.2	32.2	183.7	239.1	206.5	45.2	15.8	7.2	731.9
ALL FEMALES									
1998—									
August	92.7	145.7	316.5	307.3	263.4	53.0	27.4	14.6	1,220.6
1999—									
May	95.7	152.8	312.7	327.1	265.8	65.6	17.9	12.8	1,250.2
June	90.1	154.8	313.4	331.8	273.4	63.5	23.1	14.5	1,264.6
July	93.6	157.2	315.5	328.6	271.9	62.6	23.7	12.7	1,265.7
August	91.3	149.0	307.4	320.2	272.2	60.7	23.6	12.6	1,237.1
PERSONS									
1998—									
August	178.8	312.0	729.2	724.8	594.7	155.7	79.4	45.4	2,820.0
1999—									
May	198.4	327.0	726.6	752.3	618.9	172.0	73.1	44.5	2,912.9
June	191.0	330.6	724.6	759.8	631.8	169.4	80.5	45.0	2,932.7
July	200.8	333.1	732.2	758.4	633.1	167.9	85.7	42.0	2,953.2
August	189.1	318.6	723.4	744.2	630.8	169.4	83.5	40.5	2,899.6

ANNUAL CHANGE IN EMPLOYMENT BY AGE, NSW AUGUST 1998 TO AUGUST 1999

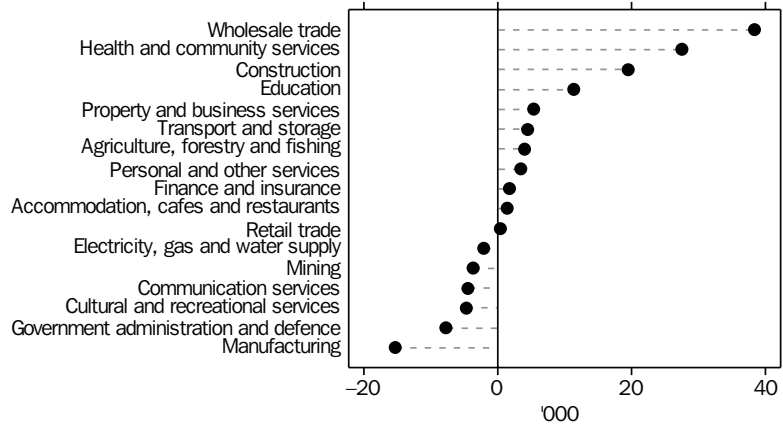


**TABLE 8. EMPLOYED PERSONS: INDUSTRY, NSW
(’000)**

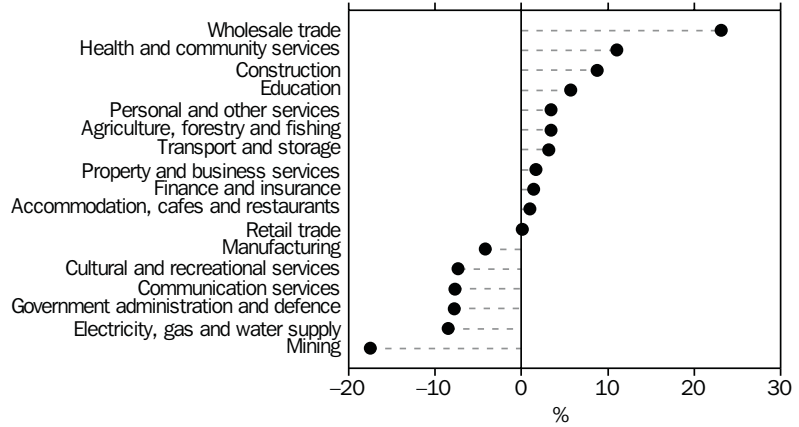
Industry division and subdivision	Males		Females		Persons	
	August 1998	August 1999	August 1998	August 1999	August 1998	August 1999
<i>Agriculture, forestry and fishing</i>	82.0	85.9	36.3	36.5	118.3	122.3
Agriculture	68.9	74.7	33.4	33.6	102.2	108.3
Services to agriculture; hunting and trapping	8.1	7.4	* 1.3	* 1.3	9.5	8.7
Forestry and logging	* 2.4	* 1.9	* 1.3	* 1.1	* 3.7	* 3.0
Commercial fishing	* 2.6	* 1.9	* 0.3	* 0.4	* 2.9	* 2.3
<i>Mining</i>	20.4	16.1	* 0.7	* 1.3	21.1	17.4
Coal mining	9.3	10.9	* 0.3	* 0.3	9.6	11.3
Oil and gas extraction	* 0.4	* 0.0	* 0.0	* 0.0	* 0.4	* 0.0
Metal ore mining	* 5.1	* 1.9	* 0.0	* 0.3	* 5.1	* 2.2
Other mining	* 4.9	* 2.5	* 0.3	* 0.6	* 5.3	* 3.1
Services to mining	* 0.7	* 0.8	* 0.0	* 0.0	* 0.7	* 0.8
<i>Manufacturing</i>	264.8	252.6	97.3	94.2	362.1	346.8
Food, beverage and tobacco manufacturing	40.2	40.1	15.2	14.2	55.4	54.3
Textile, clothing, footwear and leather manufacturing	9.0	8.9	15.0	12.4	24.0	21.3
Wood and paper product manufacturing	16.6	18.6	* 3.1	* 4.5	19.7	23.1
Printing, publishing and recorded media	23.2	21.1	13.6	17.1	36.8	38.2
Petroleum, coal, chemical and associated product manufacturing	22.8	23.2	14.4	14.9	37.2	38.1
Non-metallic mineral product manufacturing	15.7	13.8	* 4.0	* 4.1	19.8	17.9
Metal product manufacturing	61.3	48.8	16.6	7.9	77.9	56.7
Machinery and equipment manufacturing	49.6	60.1	9.9	14.6	59.5	74.8
Other manufacturing	26.3	17.9	* 5.4	* 4.5	31.8	22.4
<i>Electricity, gas and water supply</i>	18.4	18.9	6.2	* 3.6	24.6	22.5
Electricity and gas supply	10.7	12.2	* 3.1	* 1.8	13.7	14.1
Water supply, sewerage and drainage services	7.7	6.7	* 3.1	* 1.7	10.8	8.4
<i>Construction</i>	189.7	213.3	29.9	25.7	219.6	239.0
General construction	65.0	72.2	12.3	9.8	77.3	82.0
Construction trade services	124.7	141.1	17.6	15.9	142.3	157.0
<i>Wholesale trade</i>	112.1	137.7	53.4	66.1	165.5	203.8
Basic material wholesaling	26.6	28.7	8.4	9.0	35.0	37.7
Machinery and motor vehicle wholesaling	52.9	66.2	19.9	26.6	72.7	92.7
Personal and household good wholesaling	32.6	42.9	25.1	30.5	57.8	73.4
<i>Retail trade</i>	201.8	209.2	204.5	197.5	406.3	406.7
Food retailing	73.9	70.3	91.1	77.1	165.0	147.4
Personal and household good retailing	63.5	75.8	98.2	103.3	161.7	179.1
Motor vehicle retailing and services	64.3	63.0	15.2	17.1	79.5	80.2
<i>Accommodation, cafes and restaurants</i>	64.6	65.9	72.0	72.0	136.6	138.0
<i>Transport and storage</i>	99.0	104.3	41.4	40.7	140.4	144.9
Road transport	55.5	58.9	13.8	11.1	69.3	70.0
Rail transport	12.1	11.9	* 2.9	* 2.1	15.0	14.0
Water transport	* 1.5	* 1.4	* 0.3	* 1.5	* 1.8	* 2.9
Air and Space transport	12.8	12.4	10.8	9.9	23.6	22.3
Other transport	* 0.8	* 0.4	* 0.7	* 0.0	* 1.5	* 0.4
Services to transport	11.4	15.0	11.8	15.1	23.2	30.1
Storage	* 5.0	* 4.3	* 1.0	* 1.1	6.0	* 5.3
<i>Communication services</i>	39.1	33.2	17.8	19.3	56.9	52.5
<i>Finance and insurance</i>	55.4	60.0	75.7	72.9	131.1	132.9
Finance	32.6	27.8	45.8	40.8	78.4	68.6
Insurance	9.4	12.8	19.8	16.4	29.2	29.2
Services to finance and insurance	13.4	19.5	10.1	15.7	23.5	35.2
<i>Property and business services</i>	177.9	181.2	141.0	143.2	319.0	324.4
Property services	18.7	25.1	16.5	18.6	35.2	43.7
Business services	159.3	156.1	124.5	124.6	283.8	280.7
<i>Government administration and defence</i>	63.4	60.1	35.8	31.5	99.3	91.6
Government administration	58.0	53.5	33.4	29.5	91.4	83.0
Defence	* 5.4	6.6	* 2.4	* 1.9	7.9	8.5
<i>Education</i>	58.5	71.1	142.0	140.8	200.5	211.9
<i>Health and community services</i>	63.8	66.5	186.9	211.7	250.7	278.2
Health services	48.4	51.6	136.0	160.7	184.4	212.3
Community services	15.4	15.0	51.0	51.0	66.3	66.0
<i>Cultural and recreational services</i>	33.9	33.3	30.4	26.2	64.3	59.6
Motion picture, radio and television services	13.3	9.2	7.8	11.6	21.1	20.8
Libraries, museums and the arts	8.9	7.8	8.0	5.9	16.9	13.8
Sport and recreation	11.7	16.3	14.7	8.7	26.4	25.0
<i>Personal and other services</i>	54.6	53.2	49.2	54.0	103.8	107.3
Personal services	21.1	17.1	31.2	34.5	52.2	51.5
Other services	33.2	36.1	16.7	18.8	49.9	55.0
Private households employing staff	* 0.4	* 0.0	* 1.4	* 0.7	* 1.7	* 0.7
Total employed	1,599.4	1,662.6	1,220.6	1,237.1	2,820.0	2,899.6

ANNUAL CHANGE IN EMPLOYMENT BY INDUSTRY DIVISION, NSW, AUGUST 1998 TO AUGUST 1999

NUMBER



PROPORTION

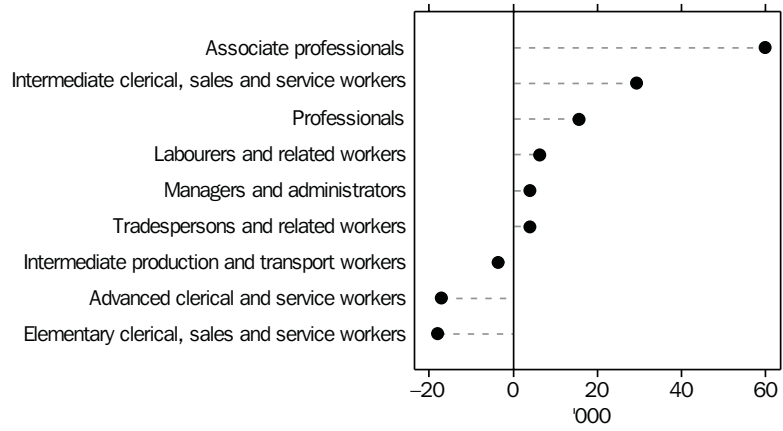


**TABLE 9. EMPLOYED PERSONS: OCCUPATION, NSW
(^{'000})**

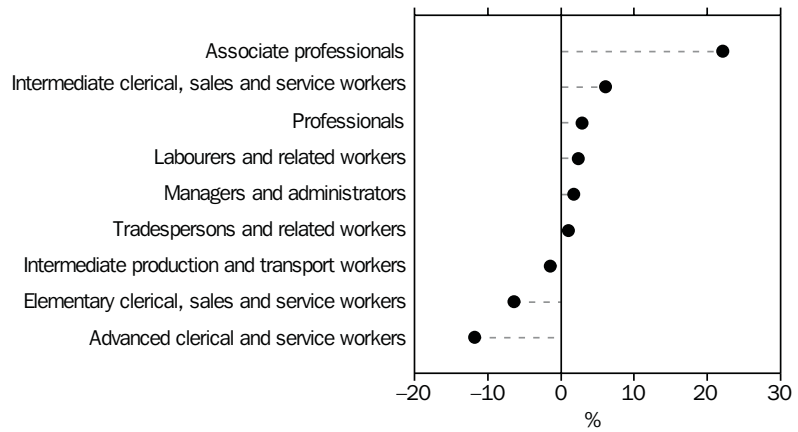
<i>Major and sub-major occupation group</i>	<i>Males</i>		<i>Females</i>		<i>Persons</i>	
	<i>August 1998</i>	<i>August 1999</i>	<i>August 1998</i>	<i>August 1999</i>	<i>August 1998</i>	<i>August 1999</i>
<i>Managers and administrators</i>	172.0	171.7	46.7	50.9	218.8	222.6
Generalist managers	33.8	49.3	* 5.0	* 5.0	38.8	54.3
Specialist managers	85.6	65.7	24.0	24.7	109.6	90.3
Farmers and farm managers	52.7	56.8	17.8	21.2	70.4	78.0
<i>Professionals</i>	273.2	268.7	259.6	279.7	532.9	548.4
Science, building and engineering professionals	48.0	46.4	8.4	6.6	56.4	53.0
Business and information professionals	98.4	97.5	56.7	63.6	155.1	161.1
Health professionals	29.3	29.5	68.3	71.8	97.5	101.3
Education professionals	36.8	49.5	92.7	96.2	129.5	145.8
Social, arts and miscellaneous professionals	60.8	45.7	33.5	41.4	94.3	87.2
<i>Associate professionals</i>	175.0	218.7	95.3	111.5	270.4	330.2
Science, engineering and related associate professionals	30.4	36.7	* 4.5	8.8	34.9	45.5
Business and administrative associate professionals	43.3	62.9	34.3	40.4	77.6	103.3
Managing supervisors (sales and service)	80.5	94.3	40.4	47.8	120.9	142.1
Health and welfare associate professionals	* 3.2	* 3.5	10.0	9.9	13.1	13.4
Other associate professionals	17.7	21.2	6.1	* 4.7	23.8	26.0
<i>Tradespersons and related workers</i>	344.0	346.9	32.3	33.2	376.3	380.1
Mechanical and fabrication engineering tradespersons	65.0	61.3	* 1.0	* 1.0	66.0	62.3
Automotive tradespersons	42.1	40.6	* 0.0	* 0.4	42.1	41.0
Electrical and electronics tradespersons	67.6	64.5	* 0.4	* 1.0	68.0	65.5
Construction tradespersons	93.1	101.9	* 0.3	* 0.4	93.4	102.4
Food tradespersons	17.6	21.9	* 4.7	8.5	22.3	30.4
Skilled agricultural and horticultural workers	19.3	21.9	* 4.6	* 1.4	23.9	23.3
Other tradespersons and related workers	39.2	34.8	21.3	20.4	60.5	55.3
<i>Advanced clerical and service workers</i>	16.1	14.3	129.8	114.4	145.9	128.7
Secretaries and personal assistants	* 3.0	* 1.1	88.9	76.4	92.0	77.4
Other advanced clerical and service workers	13.0	13.2	40.9	38.0	53.9	51.3
<i>Intermediate clerical, sales and service workers</i>	132.8	152.3	346.9	356.7	479.8	509.0
Intermediate clerical workers	72.9	73.6	216.6	226.8	289.5	300.4
Intermediate sales and related workers	29.8	40.6	16.6	20.0	46.3	60.5
Intermediate service workers	30.2	38.1	113.8	109.9	144.0	148.1
<i>Intermediate production and transport workers</i>	216.2	216.2	33.7	30.0	249.9	246.2
Intermediate plant operators	46.2	48.4	* 2.3	* 2.4	48.5	50.8
Intermediate machine operators	16.2	16.9	9.8	7.1	26.0	24.0
Road and rail transport drivers	88.9	89.7	* 5.4	7.9	94.3	97.5
Other intermediate production and transport workers	65.0	61.2	16.1	12.6	81.1	73.8
<i>Elementary clerical, sales and service workers</i>	96.9	98.0	184.2	165.2	281.1	263.1
Elementary clerks	11.9	8.6	17.2	17.6	29.0	26.2
Elementary sales workers	62.5	66.4	157.3	139.4	219.7	205.8
Elementary service workers	22.5	23.0	9.8	8.2	32.3	31.1
<i>Labourers and related workers</i>	173.1	175.9	91.9	95.5	265.0	271.3
Cleaners	33.3	27.9	34.0	37.0	67.3	64.8
Factory labourers	53.4	47.2	24.8	27.5	78.1	74.8
Other labourers and related workers	86.5	100.8	33.2	31.0	119.6	131.7
Total employed	1,599.4	1,662.6	1,220.6	1,237.1	2,820.0	2,899.6

ANNUAL CHANGE IN EMPLOYMENT BY OCCUPATION GROUP, NSW, AUGUST 1998 TO AUGUST 1999

NUMBER



PROPORTION



**TABLE 10. UNEMPLOYED PERSONS: AGE, NSW
(’000)**

Month	Age group (years)						Total unemployed
	15 19	20 24	25 34	35 44	45 54	55 and over	
MALES							
1998— August	23.4	23.2	30.5	26.4	21.3	9.8	134.6
1999— May	21.1	17.0	27.9	19.5	16.2	8.5	110.1
June	17.7	18.0	28.4	20.4	13.8	9.7	108.0
July	18.6	17.3	29.2	17.4	11.3	7.5	101.3
August	18.7	23.9	27.6	22.5	11.0	11.4	115.3
FEMALES							
1998— August	12.5	16.7	15.0	22.1	14.3	* 4.3	85.0
1999— May	19.7	14.9	19.9	18.4	14.1	* 3.0	90.0
June	15.4	12.6	21.1	17.3	11.3	* 3.8	81.5
July	15.1	9.8	20.6	16.8	9.5	* 4.8	76.5
August	17.3	15.0	18.1	21.4	10.3	* 4.5	86.7
PERSONS							
1998— August	35.9	39.9	45.5	48.5	35.7	14.1	219.6
1999— May	40.8	31.9	47.9	37.9	30.2	11.5	200.1
June	33.1	30.6	49.5	37.8	25.1	13.5	189.6
July	33.7	27.1	49.8	34.2	20.7	12.3	177.8
August	36.0	38.9	45.8	44.0	21.4	15.9	202.0

**TABLE 11. UNEMPLOYED PERSONS: UNEMPLOYMENT RATE BY AGE, NSW
(per cent)**

Month	Age group (years)						Total unemployment rate
	15 19	20 24	25 34	35 44	45 54	55 and over	
MALES							
1998— August	21.4	12.3	6.9	5.9	6.0	5.0	7.8
1999— May	17.0	8.9	6.3	4.4	4.4	4.2	6.2
June	15.0	9.3	6.5	4.6	3.7	4.8	6.1
July	14.8	9.0	6.6	3.9	3.0	3.7	5.7
August	16.1	12.4	6.2	5.0	3.0	5.5	6.5
FEMALES							
1998— August	11.9	10.3	4.5	6.7	5.2	* 4.3	6.5
1999— May	17.1	8.9	6.0	5.3	5.0	* 3.0	6.7
June	14.6	7.5	6.3	5.0	4.0	* 3.6	6.1
July	13.9	5.9	6.1	4.9	3.4	* 4.6	5.7
August	15.9	9.1	5.6	6.3	3.7	* 4.4	6.5
PERSONS							
1998— August	16.7	11.3	5.9	6.3	5.7	4.8	7.2
1999— May	17.0	8.9	6.2	4.8	4.7	3.8	6.4
June	14.8	8.5	6.4	4.7	3.8	4.4	6.1
July	14.4	7.5	6.4	4.3	3.2	4.0	5.7
August	16.0	10.9	5.9	5.6	3.3	5.2	6.5

TABLE 12. UNEMPLOYED PERSONS: INDUSTRY AND OCCUPATION OF LAST FULL-TIME JOB, NSW, AUGUST 1999
(’000)

	Males	Females	Persons
<i>Had worked for two weeks or more in a full-time job in the last two years</i>	54.0	30.7	84.7
Industry division—			
Agriculture, forestry and fishing	* 5.7	* 1.4	7.1
Manufacturing	8.1	* 2.8	11.0
Construction	10.5	* 0.3	10.8
Wholesale trade	* 3.2	* 1.1	* 4.3
Retail trade	* 4.7	6.6	11.4
Accommodation, cafes and restaurants	* 3.2	* 3.8	6.9
Transport and storage	* 4.1	* 0.3	* 4.5
Finance and insurance	* 1.7	* 2.8	* 4.6
Property and business services	* 4.2	* 2.9	7.2
Education	* 1.4	* 1.0	* 2.3
Health and community services	* 0.8	* 4.0	* 4.7
Cultural and recreational services	* 1.1	* 0.4	* 1.4
Personal and other services	* 1.0	* 1.1	* 2.1
Other industries	* 4.1	* 2.2	6.3
Major occupation group—			
Managers and administrators	* 1.8	* 0.7	* 2.5
Professionals	* 5.0	* 3.4	8.3
Associate professionals	* 4.4	* 2.9	7.2
Tradespersons and related workers	7.6	* 1.8	9.4
Advanced clerical and service workers	* 0.0	* 1.5	* 1.5
Intermediate clerical, sales and service workers	6.3	7.7	14.1
Intermediate production and transport workers	12.9	* 0.4	13.3
Elementary clerical, sales and service workers	* 2.5	6.7	9.1
Labourers and related workers	13.6	* 5.7	19.3
<i>Had not worked full-time for two weeks or more in the last two years</i>	58.9	54.0	112.9
Looking for first job	15.5	11.2	26.7
Had worked at some time in the past	43.3	42.8	86.2
<i>Stood down</i>	* 2.0	* 2.0	* 4.1
Total unemployed	115.3	86.7	202.0

UNEMPLOYMENT RATE BY AGE, NSW

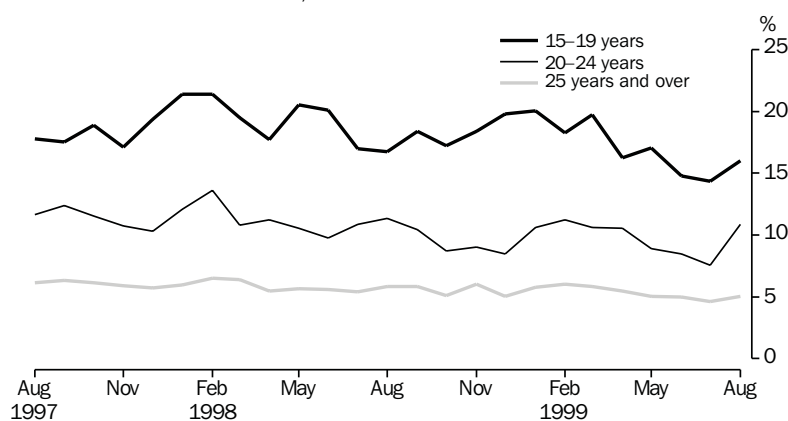


TABLE 13. UNEMPLOYED PERSONS: DURATION OF UNEMPLOYMENT, NSW

Duration of unemployment (weeks)	Males		Females		Persons				
	August 1998	August 1999	August 1998	August 1999	August 1998	May 1999	June 1999	July 1999	August 1999
	— '000 —								
Under 52	83.4	78.1	54.9	64.8	138.2	138.3	128.3	123.3	142.9
Under 2	9.1	7.2	* 5.8	8.8	14.9	11.7	16.6	17.2	16.0
2 and under 4	9.8	11.0	9.9	10.5	19.7	19.5	23.7	21.4	21.5
4 and under 8	10.6	14.6	11.7	9.4	22.3	24.9	17.7	18.1	24.0
8 and under 13	9.1	8.8	* 4.5	8.6	13.6	17.7	14.5	13.4	17.4
13 and under 26	14.8	11.8	10.0	9.4	24.7	37.3	31.0	23.2	21.2
26 and under 39	22.4	19.6	9.9	16.0	32.3	19.9	20.1	24.6	35.6
39 and under 52	7.6	* 5.0	* 3.0	* 2.1	10.6	7.3	* 4.8	* 5.4	7.1
52 and over	51.3	37.2	30.1	21.9	81.4	61.9	61.2	54.5	59.1
52 and under 104	21.2	12.6	12.6	10.4	33.8	23.8	25.4	19.4	23.0
104 and over	30.1	24.6	17.5	11.5	47.6	38.1	35.9	35.2	36.1
Total unemployed	134.6	115.3	85.0	86.7	219.6	200.1	189.6	177.8	202.0
	— Weeks —								
Average	68.3	59.1	59.7	42.1	64.9	56.1	54.6	58.3	51.8
Median	31	26	26	20	29	19	21	21	26

TABLE 14. UNEMPLOYED PERSONS: UNEMPLOYMENT RATE BY BIRTHPLACE AND PERIOD OF ARRIVAL, NSW (per cent)

	August 1998	May 1999	June 1999	July 1999	August 1999
Birthplace—					
Australia	7.2	6.1	6.0	5.8	6.5
Outside Australia	7.2	7.2	6.4	5.5	6.6
Main English speaking countries	5.2	4.3	4.0	4.1	5.1
Other countries	8.4	8.6	7.6	6.1	7.4
Period of arrival of overseas born—					
Before 1961	* 2.9	* 3.3	* 2.4	* 1.6	* 3.7
1961-1970	4.0	* 4.4	* 3.4	5.7	6.6
1971-1980	6.2	6.6	4.9	4.0	5.7
1981-1985	7.4	7.1	8.5	* 4.0	6.8
1986-1990	8.1	8.0	7.4	5.4	4.6
1991 to survey date	13.1	10.9	9.6	8.9	10.3
Total unemployment rate	7.2	6.4	6.1	5.7	6.5

UNEMPLOYMENT RATE BY PERIOD OF ARRIVAL OF OVERSEAS BORN, NSW, AUGUST 1999

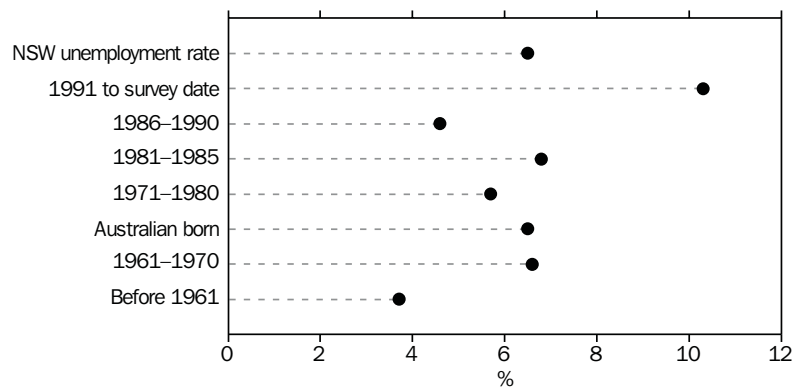


TABLE 15. UNEMPLOYED PERSONS: DURATION OF UNEMPLOYMENT BY AGE, NSW

Month	Duration of unemployment (weeks)					Total unemployed persons ('000)	Average duration (weeks)	Median duration (weeks)
	Under 13 ('000)	13 and under 26 ('000)	26 and under 39 ('000)	39 and under 104 ('000)	104 and over ('000)			
15-19								
1998— August	11.5	* 5.3	10.1	6.8	* 2.3	35.9	31.5	26
1999— June	18.7	6.7	* 3.3	* 3.5	* 0.9	33.1	17.7	8
July	20.9	* 4.9	* 4.2	* 2.9	* 0.7	33.7	16.6	8
August	17.7	* 5.3	6.8	* 4.6	* 1.7	36.0	24.2	13
20-24								
1998— August	13.7	6.3	* 3.9	9.5	6.5	39.9	49.7	24
1999— June	12.3	* 5.8	* 4.0	* 4.1	* 4.4	30.6	44.9	18
July	10.0	* 2.9	* 5.8	* 3.2	* 5.3	27.1	54.0	26
August	19.5	* 2.6	7.4	* 5.1	* 4.3	38.9	36.2	11
25-34								
1998— August	16.2	* 5.3	6.1	6.4	11.4	45.5	67.3	26
1999— June	18.1	8.5	* 4.7	7.9	10.2	49.5	59.2	22
July	17.6	6.8	8.2	8.9	8.3	49.8	53.9	26
August	18.2	* 4.5	7.7	6.8	8.6	45.8	57.3	26
35-44								
1998— August	14.1	* 3.7	* 5.2	12.2	13.3	48.5	83.4	40
1999— June	10.8	6.4	* 4.5	6.6	9.4	37.8	69.3	26
July	10.7	* 5.9	* 3.7	* 3.8	10.0	34.2	76.8	26
August	13.2	* 5.6	8.4	8.5	8.4	44.0	55.7	30
45 AND OVER								
1998— August	15.1	* 4.1	6.9	9.6	14.1	49.7	81.2	35
1999— June	12.4	* 3.5	* 3.6	8.1	10.9	38.6	73.6	34
July	10.9	* 2.7	* 2.6	5.9	10.9	33.0	92.0	40
August	10.4	* 3.3	* 5.3	* 5.2	13.1	37.3	83.4	34
TOTAL								
1998— August	70.6	24.7	32.3	44.4	47.6	219.6	64.9	29
1999— June	72.5	31.0	20.1	30.2	35.9	189.6	54.6	21
July	70.1	23.2	24.6	24.8	35.2	177.8	58.3	21
August	79.0	21.2	35.6	30.1	36.1	202.0	51.8	26

TABLE 16. LABOUR FORCE STATUS, SYDNEY (MSR)

Month	Employed			Unemployed			Labour force ('000)	Unemployment rate (per cent)	Participation rate (per cent)
	Full-time workers ('000)	Part-time workers ('000)	Total ('000)	Looking for full-time work ('000)	Looking for part-time work ('000)	Total ('000)			
MALES									
August—									
1995	916.8	97.0	1,013.9	71.9	7.5	79.4	1,093.2	7.3	73.4
1996	916.8	121.1	1,037.9	70.8	12.3	83.1	1,121.0	7.4	74.1
1997	920.0	110.3	1,030.3	62.8	9.9	72.7	1,103.1	6.6	71.8
1998—									
June	955.1	118.0	1,073.1	65.1	11.3	76.5	1,149.6	6.7	73.9
July	969.1	117.4	1,086.5	55.2	6.3	61.5	1,148.0	5.4	73.7
August	948.3	110.7	1,059.0	58.2	10.8	69.0	1,128.0	6.1	72.4
1999—									
May	966.1	128.8	1,094.9	47.4	9.9	57.2	1,152.1	5.0	73.0
June	978.4	127.0	1,105.4	44.7	9.3	54.0	1,159.4	4.7	73.4
July	991.9	125.1	1,117.0	39.3	10.8	50.1	1,167.1	4.3	73.8
August	972.9	129.0	1,101.9	44.1	11.6	55.7	1,157.6	4.8	73.1
MARRIED FEMALES									
August—									
1995	271.8	187.5	459.3	14.7	7.8	22.5	481.8	4.7	55.8
1996	268.4	191.0	459.4	12.5	9.0	21.4	480.9	4.5	54.9
1997	275.0	190.1	465.1	10.9	8.5	19.5	484.5	4.0	54.9
1998—									
June	272.8	208.6	481.4	11.3	7.7	19.0	500.4	3.8	56.4
July	291.3	193.7	485.0	11.4	7.0	18.4	503.4	3.7	57.1
August	274.6	198.8	473.3	14.2	7.1	21.3	494.6	4.3	55.9
1999—									
May	269.0	200.9	469.9	8.5	9.3	17.8	487.7	3.6	53.5
June	280.5	197.0	477.6	10.7	5.7	16.3	493.9	3.3	54.8
July	285.3	193.8	479.1	9.0	* 5.1	14.1	493.2	2.9	54.3
August	278.3	190.9	469.2	8.8	7.1	15.9	485.1	3.3	53.0
ALL FEMALES									
August—									
1995	499.0	280.2	779.2	34.9	19.4	54.3	833.5	6.5	53.7
1996	509.3	290.5	799.9	30.9	17.3	48.2	848.1	5.7	53.7
1997	504.4	298.2	802.6	33.9	17.5	51.4	854.0	6.0	53.3
1998—									
June	523.6	322.3	845.8	34.0	19.2	53.3	899.1	5.9	55.5
July	548.4	305.6	854.0	33.4	14.5	47.9	901.9	5.3	55.6
August	516.1	307.8	823.8	35.4	15.1	50.5	874.3	5.8	53.8
1999—									
May	524.2	316.0	840.2	28.8	19.1	47.9	888.1	5.4	54.1
June	534.0	310.4	844.4	28.8	15.6	44.4	888.9	5.0	54.1
July	544.6	302.5	847.2	27.4	13.7	41.2	888.3	4.6	54.0
August	521.2	308.6	829.8	23.4	18.9	42.3	872.1	4.9	52.9
PERSONS									
August—									
1995	1,415.8	377.3	1,793.1	106.7	26.9	133.7	1,926.8	6.9	63.3
1996	1,426.1	411.6	1,837.7	101.7	29.6	131.3	1,969.1	6.7	63.7
1997	1,424.5	408.4	1,832.9	96.7	27.4	124.1	1,957.0	6.3	62.3
1998—									
June	1,478.6	440.3	1,918.9	99.2	30.6	129.7	2,048.6	6.3	64.5
July	1,517.4	423.1	1,940.5	88.7	20.7	109.4	2,049.9	5.3	64.5
August	1,464.4	418.5	1,882.9	93.6	25.9	119.5	2,002.4	6.0	62.9
1999—									
May	1,490.2	444.9	1,935.1	76.2	28.9	105.1	2,040.2	5.2	63.4
June	1,512.5	437.4	1,949.9	73.5	25.0	98.4	2,048.3	4.8	63.5
July	1,536.5	427.6	1,964.2	66.8	24.6	91.3	2,055.5	4.4	63.7
August	1,494.1	437.6	1,931.7	67.5	30.5	98.0	2,029.7	4.8	62.8

TABLE 17. LABOUR FORCE STATUS, BALANCE OF NSW (MSR)

Month	Employed			Unemployed			Labour force ('000)	Unemployment rate (per cent)	Participation rate (per cent)
	Full-time workers ('000)	Part-time workers ('000)	Total ('000)	Looking for full-time work ('000)	Looking for part-time work ('000)	Total ('000)			
MALES									
August—									
1995	487.0	70.4	557.4	49.9	* 4.6	54.5	611.9	8.9	70.0
1996	484.3	63.8	548.1	56.8	6.8	63.5	611.7	10.4	69.3
1997	470.0	66.8	536.8	55.8	* 5.0	60.9	597.7	10.2	67.0
1998—									
June	489.6	63.5	553.1	51.6	5.7	57.3	610.5	9.4	67.7
July	496.0	59.1	555.1	58.9	6.2	65.1	620.2	10.5	68.7
August	476.0	64.4	540.4	57.3	8.3	65.6	606.0	10.8	67.1
1999—									
May	494.0	73.8	567.8	46.0	6.9	52.9	620.7	8.5	68.1
June	481.0	81.6	562.6	46.9	7.1	54.0	616.7	8.8	67.5
July	499.9	70.5	570.4	43.9	7.3	51.2	621.6	8.2	68.0
August	491.2	69.4	560.6	51.8	7.8	59.6	620.2	9.6	67.8
MARRIED FEMALES									
August—									
1995	139.1	124.7	263.8	10.6	* 4.0	14.6	278.4	5.2	51.6
1996	133.8	124.5	258.3	9.9	* 5.1	15.0	273.3	5.5	50.2
1997	123.5	122.2	245.7	14.1	* 4.4	16.9	262.6	6.4	48.8
1998—									
June	134.8	128.4	263.2	9.1	5.9	15.1	278.3	5.4	49.6
July	140.0	126.3	266.3	10.8	* 5.1	15.9	282.2	5.6	50.5
August	132.7	123.4	256.1	10.4	* 3.3	13.7	269.8	5.1	48.8
1999—									
May	130.2	134.9	265.1	10.1	* 4.3	14.4	279.5	5.2	50.7
June	137.6	136.6	274.2	8.3	* 5.2	13.5	287.7	4.7	51.9
July	130.9	136.4	267.3	9.8	* 3.2	12.9	280.2	4.6	50.8
August	128.5	134.2	262.7	13.6	* 3.7	17.3	280.1	6.2	51.0
ALL FEMALES									
August—									
1995	211.2	192.5	403.7	24.8	13.0	37.8	441.5	8.6	49.2
1996	213.2	182.1	395.3	28.5	12.9	41.3	436.6	9.5	48.1
1997	200.8	181.2	381.9	30.6	9.9	40.6	422.5	9.6	46.1
1998—									
June	206.6	193.3	399.9	23.1	12.0	35.0	435.0	8.1	47.0
July	217.4	187.5	405.0	26.2	14.0	40.3	445.2	9.0	48.1
August	208.7	188.0	396.7	27.0	7.5	34.5	431.2	8.0	46.5
1999—									
May	205.4	204.7	410.0	28.0	14.1	42.1	452.2	9.3	48.4
June	212.8	207.3	420.2	23.5	13.6	37.1	457.3	8.1	48.9
July	210.3	208.3	418.6	25.8	9.6	35.3	453.9	7.8	48.5
August	202.3	205.0	407.3	31.4	12.9	44.4	451.7	9.8	48.2
PERSONS									
August—									
1995	698.1	262.9	961.1	74.7	17.6	92.3	1,053.4	8.8	59.4
1996	697.5	245.9	943.5	85.2	19.6	104.9	1,048.3	10.0	58.5
1997	670.8	248.0	918.8	86.5	14.9	101.4	1,020.2	9.9	56.4
1998—									
June	696.2	256.9	953.1	74.7	17.7	92.4	1,045.4	8.8	57.2
July	713.4	246.6	960.0	85.2	20.2	105.4	1,065.4	9.9	58.3
August	684.7	252.4	937.1	84.3	15.8	100.1	1,037.2	9.7	56.7
1999—									
May	699.4	278.5	977.8	74.0	21.1	95.0	1,072.9	8.9	58.1
June	693.8	289.0	982.8	70.5	20.7	91.1	1,073.9	8.5	58.1
July	710.2	278.8	989.0	69.6	16.8	86.5	1,075.5	8.0	58.1
August	693.5	274.5	967.9	83.3	20.7	104.0	1,071.9	9.7	57.9

**TABLE 18. EMPLOYED PERSONS: INDUSTRY AND OCCUPATION
SYDNEY (MSR) AND BALANCE OF NSW (MSR), AUGUST 1999
(*000)**

<i>Industry division and Major occupation group</i>	<i>Males</i>	<i>Females</i>	<i>Persons</i>
SYDNEY (MSR)			
Industry—			
Agriculture, forestry and fishing	* 5.2	* 3.4	8.6
Mining	* 2.1	* 0.3	* 2.5
Manufacturing	168.7	72.7	241.5
Electricity, gas and water supply	11.5	* 2.5	14.0
Construction	154.6	17.5	172.2
Wholesale trade	104.8	55.5	160.3
Retail trade	130.1	118.0	248.1
Accommodation, cafes and restaurants	44.6	41.0	85.6
Transport and storage	72.7	31.2	103.9
Communication services	24.3	14.9	39.2
Finance and insurance	53.5	59.8	113.3
Property and business services	145.0	107.2	252.1
Government administration and defence	32.6	21.5	54.0
Education	44.7	89.3	134.0
Health and community services	46.5	140.5	187.0
Cultural and recreational services	27.1	21.3	48.4
Personal and other services	33.7	33.2	67.0
Occupation—			
Managers and administrators	91.5	23.7	115.2
Professionals	207.4	201.8	409.2
Associate professionals	149.8	73.1	222.9
Tradespersons and related workers	229.4	18.0	247.4
Advanced clerical and service workers	9.9	80.9	90.9
Intermediate clerical, sales and service workers	114.9	258.3	373.2
Intermediate production and transport workers	129.9	20.0	149.9
Elementary clerical, sales and service workers	67.6	101.2	168.8
Labourers and related workers	101.4	52.7	154.0
Total employed	1,101.9	829.8	1,931.7
BALANCE OF NSW (MSR)			
Industry—			
Agriculture, forestry and fishing	80.7	33.1	113.8
Mining	13.9	* 1.0	14.9
Manufacturing	83.8	21.5	105.3
Electricity, gas and water supply	7.5	* 1.0	8.5
Construction	58.7	8.2	66.8
Wholesale trade	32.9	10.6	43.5
Retail trade	79.0	79.5	158.5
Accommodation, cafes and restaurants	21.3	31.0	52.4
Transport and storage	31.5	9.5	41.0
Communication services	8.9	* 4.4	13.3
Finance and insurance	6.5	13.0	19.6
Property and business services	36.2	36.0	72.2
Government administration and defence	27.5	10.0	37.5
Education	26.4	51.4	77.8
Health and community services	20.0	71.2	91.3
Cultural and recreational services	6.2	* 5.0	11.2
Personal and other services	19.5	20.8	40.3
Occupation—			
Managers and administrators	80.2	27.1	107.4
Professionals	61.3	77.8	139.2
Associate professionals	68.8	38.4	107.2
Tradespersons and related workers	117.5	15.2	132.7
Advanced clerical and service workers	* 4.3	33.5	37.8
Intermediate clerical, sales and service workers	37.3	98.5	135.8
Intermediate production and transport workers	86.3	10.0	96.3
Elementary clerical, sales and service workers	30.3	63.9	94.3
Labourers and related workers	74.5	42.8	117.3
Total employed	560.6	407.3	967.9

TABLE 19. LABOUR FORCE STATUS (a), REGIONS OF NSW AND ACT

	<i>Month</i>	<i>Employed</i> (<i>'000</i>)	<i>Unemployed</i> (<i>'000</i>)	<i>Labour</i> <i>force</i> (<i>'000</i>)	<i>Unemp-</i> <i>loyment</i> <i>rate</i> (<i>per cent</i>)	<i>Partici-</i> <i>pation</i> <i>rate</i> (<i>per cent</i>)
INNER SYDNEY AND INNER WESTERN SYDNEY (SRs)						
MALES	1998— August	102.6	5.8	108.4	5.4	66.9
	1999— June	132.1	6.5	138.6	4.7	74.0
	July	133.1	7.7	140.8	5.5	74.2
	August	130.8	7.6	138.4	5.5	73.1
FEMALES	1998— August	85.5	5.0	90.5	5.5	54.2
	1999— June	117.9	* 3.4	121.3	* 2.8	61.6
	July	117.2	5.6	122.8	4.6	62.9
	August	109.4	4.8	114.2	4.2	61.4
PERSONS	1998— August	188.1	10.8	198.9	5.4	60.4
	1999— June	250.1	9.9	259.9	3.8	67.7
	July	250.3	13.4	263.6	5.1	68.5
	August	240.2	12.4	252.6	4.9	67.3
INNER SYDNEY (SR)						
MALES	1998— August	58.5	4.0	62.5	6.4	64.3
	1999— June	86.8	* 3.2	90.0	* 3.6	74.3
	July	87.8	3.9	91.7	4.2	74.9
	August	83.5	5.1	88.6	5.7	73.1
FEMALES	1998— August	47.7	* 2.9	50.7	* 5.8	55.4
	1999— June	71.0	* 1.7	72.8	* 2.4	64.2
	July	68.3	3.9	72.2	5.4	63.3
	August	59.4	* 3.4	62.8	* 5.4	58.8
PERSONS	1998— August	106.3	6.9	113.2	6.1	60.0
	1999— June	157.9	4.9	162.8	3.0	69.4
	July	156.1	7.8	163.9	4.8	69.3
	August	142.9	8.5	151.3	5.6	66.4
EASTERN SUBURBS (SR)						
MALES	1998— August	63.7	3.2	66.9	4.8	70.2
	1999— June	71.3	* 1.8	73.1	* 2.4	71.7
	July	74.8	* 2.1	76.9	* 2.8	74.5
	August	72.8	3.7	76.5	4.9	75.8
FEMALES	1998— August	57.9	2.8	60.8	4.7	61.8
	1999— June	65.7	2.4	68.1	3.5	62.9
	July	61.5	* 2.0	63.5	* 3.1	61.0
	August	59.0	* 1.7	60.7	* 2.8	61.0
PERSONS	1998— August	121.7	6.0	127.7	4.7	65.9
	1999— June	137.0	4.2	141.2	3.0	67.2
	July	136.3	4.1	140.4	2.9	67.7
	August	131.8	5.4	137.2	4.0	68.4

TABLE 19. LABOUR FORCE STATUS (a), REGIONS OF NSW AND ACT—continued

	<i>Month</i>	<i>Employed</i> (<i>'000</i>)	<i>Unemployed</i> (<i>'000</i>)	<i>Labour</i> <i>force</i> (<i>'000</i>)	<i>Unemp-</i> <i>loyment</i> <i>rate</i> (<i>per cent</i>)	<i>Partici-</i> <i>pation</i> <i>rate</i> (<i>per cent</i>)
ST GEORGE—SUTHERLAND (SR)						
MALES	1998— August	114.5	6.2	120.7	5.1	76.1
	1999— June	114.5	4.6	119.0	3.8	69.2
	July	118.1	5.8	123.9	4.7	71.0
	August	113.6	3.4	117.1	2.9	69.5
FEMALES	1998— August	98.2	2.6	100.9	2.6	56.3
	1999— June	84.9	1.9	86.7	2.2	51.9
	July	90.0	2.9	92.9	3.1	52.4
	August	85.7	2.7	88.4	3.0	50.8
PERSONS	1998— August	212.7	8.8	221.5	4.0	65.6
	1999— June	199.3	6.4	205.8	3.1	60.7
	July	208.1	8.7	216.9	4.0	61.6
	August	199.3	6.1	205.5	3.0	60.0
CANTERBURY—BANKSTOWN (SR)						
MALES	1998— August	72.6	7.3	79.8	9.1	64.7
	1999— June	88.0	6.3	94.2	6.6	72.6
	July	87.9	3.8	91.8	4.2	70.3
	August	91.4	3.2	94.6	3.3	70.8
FEMALES	1998— August	54.1	3.4	57.5	5.9	44.4
	1999— June	53.4	3.0	56.4	5.3	46.1
	July	48.8	3.1	51.8	5.9	41.9
	August	53.3	3.3	56.5	5.8	44.6
PERSONS	1998— August	126.6	10.7	137.3	7.8	54.3
	1999— June	141.4	9.2	150.7	6.1	59.7
	July	136.7	6.9	143.6	4.8	56.5
	August	144.7	6.4	151.1	4.2	58.1
FAIRFIELD—LIVERPOOL AND OUTER SOUTH WESTERN SYDNEY (SRs)						
MALES	1998— August	139.5	14.2	153.6	9.2	73.9
	1999— June	141.8	11.4	153.2	7.5	73.2
	July	146.2	10.0	156.3	6.4	74.5
	August	143.9	13.7	157.6	8.7	74.2
FEMALES	1998— August	101.0	11.4	112.4	10.1	52.5
	1999— June	95.7	11.0	106.7	10.3	48.8
	July	95.6	9.8	105.4	9.3	48.5
	August	97.1	8.7	105.9	8.3	46.9
PERSONS	1998— August	240.5	25.5	266.0	9.6	63.1
	1999— June	237.5	22.5	260.0	8.6	60.7
	July	241.9	19.8	261.7	7.6	61.3
	August	241.0	22.5	263.5	8.5	60.2

TABLE 19. LABOUR FORCE STATUS (a), REGIONS OF NSW AND ACT—continued

	<i>Month</i>	<i>Employed</i> (<i>'000</i>)	<i>Unemployed</i> (<i>'000</i>)	<i>Labour</i> <i>force</i> (<i>'000</i>)	<i>Unemp-</i> <i>loyment</i> <i>rate</i> (<i>per cent</i>)	<i>Partici-</i> <i>pation</i> <i>rate</i> (<i>per cent</i>)
FAIRFIELD—LIVERPOOL (SR)						
MALES	1998— August	74.1	8.4	82.6	10.2	69.7
	1999— June	81.9	6.3	88.2	7.1	69.4
	July	84.8	5.6	90.5	6.2	71.3
	August	80.1	8.3	88.3	9.4	70.5
FEMALES	1998— August	55.9	5.0	60.9	8.2	48.6
	1999— June	49.9	7.6	57.4	13.2	44.1
	July	52.7	5.7	58.4	9.7	44.1
	August	53.4	6.5	59.9	10.8	43.8
PERSONS	1998— August	130.1	13.4	143.5	9.4	58.9
	1999— June	131.8	13.8	145.6	9.5	56.6
	July	137.6	11.3	148.9	7.6	57.4
	August	133.5	14.8	148.3	10.0	56.6
CENTRAL WESTERN SYDNEY (SR)						
MALES	1998— August	75.1	4.9	80.0	6.1	70.5
	1999— June	76.9	3.5	80.4	4.4	72.0
	July	76.2	2.8	79.0	3.6	72.1
	August	75.3	5.3	80.7	6.6	72.5
FEMALES	1998— August	50.4	* 2.0	52.5	* 3.9	44.5
	1999— June	56.0	4.4	60.4	7.3	49.7
	July	55.6	3.7	59.2	6.2	48.8
	August	54.4	3.2	57.6	5.5	46.9
PERSONS	1998— August	125.5	6.9	132.4	5.2	57.2
	1999— June	132.9	8.0	140.8	5.7	60.4
	July	131.8	6.5	138.3	4.7	59.9
	August	129.7	8.5	138.3	6.2	59.0
OUTER WESTERN SYDNEY (SR) AND BLACKTOWN (C) (b)						
MALES	1998— August	161.4	9.4	170.8	5.5	76.4
	1999— June	156.7	8.1	164.8	4.9	77.4
	July	160.1	7.6	167.7	4.5	79.6
	August	162.9	5.7	168.6	3.4	76.4
FEMALES	1998— August	113.7	8.7	122.4	7.1	54.7
	1999— June	115.2	7.7	123.0	6.3	55.5
	July	121.8	8.4	130.2	6.4	59.1
	August	117.2	8.6	125.9	6.9	56.5
PERSONS	1998— August	275.1	18.1	293.1	6.2	65.6
	1999— June	272.0	15.8	287.8	5.5	66.2
	July	281.9	16.0	297.9	5.4	69.1
	August	280.1	14.3	294.5	4.9	66.4

TABLE 19. LABOUR FORCE STATUS (a), REGIONS OF NSW AND ACT—continued

	Month	Employed (<i>'000</i>)	Unemployed (<i>'000</i>)	Labour force (<i>'000</i>)	Unemp- loyment rate (per cent)	Partici- pation rate (per cent)
LOWER NORTHERN SYDNEY (SR)						
MALES	1998— August	72.9	3.2	76.1	4.2	73.1
	1999— June	75.1	* 2.0	77.1	* 2.6	72.0
	July	70.7	* 2.1	72.8	* 2.9	70.9
	August	70.3	3.8	74.2	5.2	73.2
FEMALES	1998— August	67.0	* 2.6	69.6	* 3.7	64.4
	1999— June	71.1	* 3.1	74.2	* 4.2	61.9
	July	68.5	* 1.7	70.2	* 2.5	58.3
	August	67.6	* 2.0	69.7	* 2.9	58.0
PERSONS	1998— August	140.0	5.8	145.7	4.0	68.7
	1999— June	146.2	5.1	151.3	3.4	66.7
	July	139.2	3.9	143.0	2.7	64.1
	August	137.9	5.9	143.8	4.1	64.9
HORNSBY—KU-RING-GAI (SR) AND BAULKHAM HILLS (A) (b)						
MALES	1998— August	116.2	5.2	121.4	4.2	75.6
	1999— June	113.6	* 2.8	116.4	* 2.4	76.6
	July	110.5	* 1.4	111.9	* 1.2	74.2
	August	110.9	* 2.2	113.1	* 2.0	74.8
FEMALES	1998— August	96.8	4.3	101.1	4.3	57.5
	1999— June	86.4	3.8	90.1	4.2	56.4
	July	85.7	* 0.7	86.4	* 0.9	56.1
	August	86.3	* 2.9	89.2	* 3.2	56.5
PERSONS	1998— August	213.0	9.5	222.4	4.3	66.2
	1999— June	200.0	6.6	206.5	3.2	66.3
	July	196.2	* 2.1	198.3	* 1.1	65.0
	August	197.2	5.1	202.3	2.5	65.4
NORTHERN BEACHES (SR)						
MALES	1998— August	71.3	3.7	75.0	4.9	73.5
	1999— June	69.5	* 2.8	72.3	* 3.9	79.4
	July	74.3	* 1.4	75.7	* 1.9	79.8
	August	67.0	* 2.1	69.0	* 3.0	78.1
FEMALES	1998— August	50.2	* 2.4	52.5	* 4.5	54.4
	1999— June	51.8	* 0.7	52.5	* 1.3	56.4
	July	55.4	* 0.9	56.4	* 1.7	58.5
	August	54.2	* 1.7	56.0	* 3.1	58.9
PERSONS	1998— August	121.5	6.0	127.5	4.7	64.2
	1999— June	121.3	3.5	124.8	2.8	67.8
	July	129.7	* 2.4	132.1	* 1.8	69.1
	August	121.2	3.8	125.0	3.0	68.1

TABLE 19. LABOUR FORCE STATUS (a), REGIONS OF NSW AND ACT—continued

	<i>Month</i>	<i>Employed</i> (<i>'000</i>)	<i>Unemployed</i> (<i>'000</i>)	<i>Labour</i> <i>force</i> (<i>'000</i>)	<i>Unemp-</i> <i>loyment</i> <i>rate</i> (<i>per cent</i>)	<i>Partici-</i> <i>pation</i> <i>rate</i> (<i>per cent</i>)
GOSFORD—WYONG (SR)						
MALES	1998— August	69.3	6.1	75.4	8.1	69.8
	1999— June	66.0	4.2	70.3	6.0	66.6
	July	65.1	5.3	70.3	7.5	66.3
	August	63.0	4.8	67.8	7.1	63.4
FEMALES	1998— August	48.9	5.3	54.2	9.7	47.3
	1999— June	46.3	3.1	49.4	6.2	43.1
	July	47.0	2.3	49.4	4.8	42.7
	August	45.4	2.7	48.1	5.6	41.2
PERSONS	1998— August	118.2	11.4	129.6	8.8	58.3
	1999— June	112.3	7.3	119.6	6.1	54.4
	July	112.1	7.6	119.7	6.4	54.0
	August	108.4	7.5	115.9	6.5	51.8
HUNTER (SR)						
MALES	1998— August	116.1	16.9	133.1	12.7	63.3
	1999— June	124.3	15.6	139.9	11.2	65.1
	July	126.5	13.5	140.0	9.6	64.2
	August	129.3	18.9	148.2	12.8	66.7
FEMALES	1998— August	82.5	6.9	89.3	7.7	40.4
	1999— June	98.4	10.3	108.6	9.5	47.4
	July	95.4	11.3	106.7	10.6	45.9
	August	90.5	11.2	101.7	11.0	44.1
PERSONS	1998— August	198.6	23.8	222.4	10.7	51.5
	1999— June	222.6	25.9	248.5	10.4	56.0
	July	221.9	24.8	246.7	10.0	54.8
	August	219.8	30.1	250.0	12.1	55.2
NEWCASTLE (SRS)						
MALES	1998— August	97.9	14.0	111.8	12.5	64.3
	1999— June	104.0	14.3	118.2	12.1	65.6
	July	105.9	12.4	118.4	10.5	64.1
	August	107.8	17.1	124.9	13.7	66.4
FEMALES	1998— August	68.2	5.2	73.3	7.1	41.5
	1999— June	85.9	8.7	94.6	9.2	48.9
	July	83.0	9.3	92.3	10.1	46.9
	August	79.8	8.8	88.6	10.0	45.4
PERSONS	1998— August	166.0	19.1	185.2	10.3	52.8
	1999— June	189.8	23.0	212.8	10.8	56.9
	July	188.9	21.7	210.6	10.3	55.2
	August	187.6	25.9	213.5	12.1	55.7

TABLE 19. LABOUR FORCE STATUS (a), REGIONS OF NSW AND ACT—continued

<i>Month</i>	<i>Employed (‘000)</i>	<i>Unemployed (‘000)</i>	<i>Labour force (‘000)</i>	<i>Unemp- loyment rate (per cent)</i>	<i>Partici- pation rate (per cent)</i>
ILLAWARRA AND SOUTH EASTERN (SRs) (c)					
MALES					
1998— August	147.3	15.9	163.2	9.7	70.2
1999— June	136.2	15.4	151.7	10.2	68.2
July	141.1	13.8	155.0	8.9	69.3
August	140.2	14.7	154.9	9.5	69.6
FEMALES					
1998— August	106.0	10.8	116.8	9.3	50.4
1999— June	100.3	6.8	107.0	6.3	47.6
July	97.4	6.4	103.8	6.2	46.1
August	99.5	9.0	108.5	8.3	47.3
PERSONS					
1998— August	253.3	26.7	280.0	9.5	60.3
1999— June	236.5	22.2	258.7	8.6	57.9
July	238.5	20.3	258.8	7.8	57.6
August	239.7	23.7	263.4	9.0	58.3
ILLAWARRA (SR)					
MALES					
1998— August	98.1	12.2	110.3	11.0	71.3
1999— June	88.6	11.2	99.8	11.2	66.8
July	90.8	10.8	101.5	10.6	69.1
August	91.2	10.1	101.2	9.9	69.4
FEMALES					
1998— August	69.7	8.6	78.3	11.0	49.2
1999— June	63.1	4.0	67.0	5.9	44.4
July	64.2	4.7	69.0	6.8	45.5
August	65.0	6.6	71.6	9.3	45.9
PERSONS					
1998— August	167.8	20.8	188.6	11.0	60.1
1999— June	151.6	15.1	166.8	9.1	55.5
July	155.0	15.5	170.5	9.1	57.1
August	156.2	16.7	172.9	9.7	57.3
WOLLONGONG (SRS)					
MALES					
1998— August	70.1	10.8	80.8	13.3	74.5
1999— June	66.5	8.4	74.9	11.2	70.7
July	67.2	7.0	74.2	9.5	73.0
August	66.4	7.3	73.7	9.9	73.4
FEMALES					
1998— August	50.3	6.0	56.3	10.6	51.4
1999— June	47.1	3.0	50.0	5.9	48.1
July	50.2	2.9	53.1	5.5	51.7
August	48.8	3.7	52.5	7.1	49.1
PERSONS					
1998— August	120.4	16.7	137.1	12.2	62.9
1999— June	113.5	11.4	124.9	9.1	59.5
July	117.4	9.9	127.3	7.8	62.3
August	115.2	11.0	126.2	8.7	60.9

TABLE 19. LABOUR FORCE STATUS (a), REGIONS OF NSW AND ACT—continued

	Month	Employed (<i>'000</i>)	Unemployed (<i>'000</i>)	Labour force (<i>'000</i>)	Unemp- loyment rate (per cent)	Partici- pation rate (per cent)
RICHMOND—TWEED AND MID-NORTH COAST (SRs)						
MALES	1998— August	82.0	16.1	98.0	16.4	58.8
	1999— June	107.6	11.5	119.1	9.7	63.1
	July	102.1	13.5	115.6	11.7	61.5
	August	99.2	11.8	111.0	10.7	58.9
FEMALES	1998— August	66.2	8.4	74.6	11.3	40.9
	1999— June	79.7	10.3	90.0	11.4	46.5
	July	78.3	7.5	85.8	8.7	44.5
	August	75.0	11.2	86.3	13.0	43.6
PERSONS	1998— August	148.1	24.5	172.6	14.2	49.5
	1999— June	187.4	21.8	209.1	10.4	54.7
	July	180.3	21.0	201.4	10.4	52.9
	August	174.2	23.1	197.3	11.7	51.1
NORTHERN, FAR WEST—NORTH WESTERN AND CENTRAL WEST (SRs) (d)						
MALES	1998— August	130.0	11.7	141.7	8.2	73.6
	1999— June	127.4	7.0	134.4	5.2	72.4
	July	131.4	7.4	138.8	5.3	74.9
	August	121.9	9.1	131.0	7.0	72.8
FEMALES	1998— August	94.4	* 4.4	98.8	* 4.5	52.9
	1999— June	93.7	5.9	99.6	5.9	53.5
	July	96.6	5.1	101.7	5.0	55.7
	August	91.2	6.6	97.8	6.7	56.1
PERSONS	1998— August	224.4	16.1	240.5	6.7	63.4
	1999— June	221.1	12.9	234.0	5.5	63.0
	July	228.0	12.5	240.5	5.2	65.4
	August	213.1	15.7	228.7	6.9	64.6
MURRAY—MURRUMBIDGEE (SR)						
MALES	1998— August	65.0	* 5.1	70.0	* 7.2	68.9
	1999— June	67.2	* 4.4	71.6	* 6.2	70.3
	July	69.3	* 2.9	72.3	* 4.0	73.1
	August	70.0	* 5.0	75.1	* 6.7	73.9
FEMALES	1998— August	47.8	* 3.9	51.7	* 7.6	49.2
	1999— June	48.1	* 3.9	52.0	* 7.5	51.1
	July	50.9	* 5.0	55.9	* 9.0	54.1
	August	51.1	6.3	57.4	11.0	54.5
PERSONS	1998— August	112.8	9.0	121.8	7.4	58.9
	1999— June	115.3	8.3	123.6	6.8	60.7
	July	120.2	7.9	128.2	6.2	63.4
	August	121.2	11.4	132.5	8.6	64.0

TABLE 19. LABOUR FORCE STATUS (a), REGIONS OF NSW AND ACT—continued

	<i>Month</i>	<i>Employed</i> (<i>'000</i>)	<i>Unemployed</i> (<i>'000</i>)	<i>Labour</i> <i>force</i> (<i>'000</i>)	<i>Unemp-</i> <i>loyment</i> <i>rate</i> (<i>per cent</i>)	<i>Partici-</i> <i>pation</i> <i>rate</i> (<i>per cent</i>)
AUSTRALIAN CAPITAL TERRITORY AND SOUTH EASTERN (SRs) (c)						
MALES	1998— August	131.0	9.7	140.7	6.9	73.7
	1999— June	131.6	8.9	140.5	6.3	74.9
	July	134.3	8.9	143.3	6.2	74.7
	August	132.1	10.9	143.1	7.7	74.6
FEMALES	1998— August	110.2	6.7	117.0	5.8	60.4
	1999— June	113.6	6.4	120.1	5.4	61.3
	July	110.0	4.5	114.5	3.9	58.4
	August	111.6	5.8	117.4	4.9	59.9
PERSONS	1998— August	241.2	16.5	257.7	6.4	67.0
	1999— June	245.3	15.3	260.6	5.9	67.9
	July	244.3	13.4	257.8	5.2	66.5
	August	243.8	16.7	260.5	6.4	67.2

(a) While the Labour Force Survey is designed primarily to produce reliable estimates at the national and State/Territory level, it also delivers estimates for a number of regions within States. As with national and State estimates, regional labour force estimates are subject to sampling error. Since estimates for regions are components of corresponding estimates at the State level — and are thus based on a considerably smaller sample size — they are subject to higher relative standard error. Care should therefore be taken in interpretation of regional estimates, particularly month to month movements. Tables of standard errors are included in the Technical Note on pages 59-64 of this publication. Regional estimates from September 1997 onward may not be directly comparable with those before September 1997 because a new sample has been selected which may have different characteristics to the old. (b) New region from September 1997. (c) Estimates for the South Eastern (SR) are not published separately. Data for the South Eastern (SR) are included in ACT and South Eastern (SRs) and in Illawarra and South Eastern (SRs). (d) From September 1997 includes Far West Statistical Division, previously excluded. Break in the series from September 1997.

TABLE 20. LABOUR FORCE STATUS: ORIGINAL SERIES, ACT

Month	Employed			Unemployed			Labour force ('000)	Not in labour force ('000)	Civilian population aged 15 and over ('000)	Unemployment rate (per cent)	Participation rate (per cent)
	Full-time workers ('000)	Part-time workers ('000)	Total ('000)	Looking for full-time work ('000)	Looking for part-time work ('000)	Total ('000)					
MALES											
August—											
1995	70.8	12.3	83.0	6.0	1.4	7.3	90.4	20.1	110.5	8.1	81.8
1996	69.6	10.2	79.8	6.3	1.5	7.8	87.6	23.9	111.4	8.9	78.6
1997	69.5	11.4	80.9	5.1	1.9	7.1	88.0	23.7	111.7	8.0	78.8
1998—											
June	70.2	10.7	80.9	5.6	1.3	6.9	87.8	25.5	113.3	7.9	77.5
July	70.2	12.0	82.2	5.9	1.5	7.4	89.6	23.7	113.3	8.3	79.1
August	68.2	13.6	81.8	4.4	1.6	6.0	87.8	25.4	113.2	6.9	77.6
1999—											
May	69.8	13.3	83.1	3.9	1.9	5.8	88.9	25.7	114.6	6.5	77.6
June	69.1	14.9	84.0	3.5	1.1	4.7	88.6	26.1	114.7	5.3	77.3
July	70.9	13.1	84.0	4.3	1.5	5.9	89.9	25.1	114.9	6.5	78.2
August	68.6	14.4	83.1	4.5	1.8	6.3	89.4	25.7	115.1	7.1	77.7
MARRIED FEMALES											
August—											
1995	28.3	18.0	46.3	* 0.7	* 0.6	1.3	47.6	21.6	69.2	2.7	68.8
1996	26.2	17.4	43.6	1.4	* 0.6	2.0	45.6	21.9	67.4	4.4	67.6
1997	26.8	15.3	42.0	1.6	* 0.5	2.1	44.1	22.1	66.2	4.8	66.6
1998—											
June	26.9	18.8	45.7	* 0.8	* 0.5	1.4	47.1	20.8	67.9	2.9	69.3
July	27.4	17.3	44.7	1.3	* 0.6	1.9	46.6	20.2	66.8	4.1	69.7
August	25.1	18.7	43.8	* 1.0	* 0.5	1.5	45.3	21.7	67.0	3.3	67.6
1999—											
May	26.6	16.7	43.3	* 1.0	* 0.6	1.7	45.0	24.9	69.9	3.7	64.3
June	25.5	17.1	42.6	* 0.4	* 0.5	* 0.9	43.5	25.5	69.1	* 2.1	63.0
July	25.8	16.6	42.4	* 0.6	* 0.9	1.4	43.9	24.3	68.1	3.3	64.4
August	27.2	16.7	43.9	* 0.8	* 0.8	1.6	45.4	23.2	68.6	3.4	66.2
ALL FEMALES											
August—											
1995	44.0	30.1	74.1	2.5	1.9	4.4	78.5	40.6	119.1	5.7	65.9
1996	43.4	28.1	71.5	4.7	1.8	6.5	78.0	42.7	120.7	8.3	64.7
1997	45.4	26.7	72.2	3.9	2.3	6.2	78.3	42.3	120.7	7.9	64.9
1998—											
June	46.1	31.0	77.1	1.7	1.3	3.0	80.2	41.0	121.1	3.8	66.2
July	47.3	29.3	76.6	3.1	1.2	4.3	80.9	40.3	121.2	5.3	66.8
August	44.3	29.6	73.9	3.1	1.5	4.5	78.5	42.7	121.2	5.8	64.7
1999—											
May	47.5	28.4	75.9	2.2	2.2	4.4	80.3	41.6	122.0	5.5	65.9
June	46.7	29.7	76.4	1.4	2.2	3.6	80.0	42.0	122.0	4.5	65.6
July	48.9	27.9	76.9	1.2	1.6	2.8	79.7	42.5	122.1	3.5	65.2
August	49.9	27.3	77.2	1.6	1.8	3.4	80.6	41.7	122.2	4.2	65.9
PERSONS											
August—											
1995	114.8	42.3	157.1	8.5	3.3	11.8	168.9	60.7	229.6	7.0	73.6
1996	113.0	38.3	151.3	11.0	3.3	14.3	165.6	66.5	232.1	8.6	71.3
1997	114.9	38.1	153.0	9.1	4.2	13.3	166.3	66.1	232.4	8.0	71.6
1998—											
June	116.3	41.7	158.0	7.3	2.6	9.9	168.0	66.4	234.4	5.9	71.7
July	117.5	41.3	158.8	9.0	2.7	11.7	170.5	63.9	234.4	6.9	72.7
August	112.5	43.2	155.7	7.5	3.0	10.6	166.3	68.1	234.4	6.4	70.9
1999—											
May	117.3	41.7	159.0	6.1	4.1	10.2	169.3	67.3	236.6	6.0	71.5
June	115.8	44.6	160.4	4.9	3.3	8.3	168.7	68.1	236.8	4.9	71.2
July	119.8	41.1	160.9	5.5	3.2	8.7	169.5	67.5	237.1	5.1	71.5
August	118.5	41.7	160.2	6.1	3.6	9.7	169.9	67.4	237.3	5.7	71.6

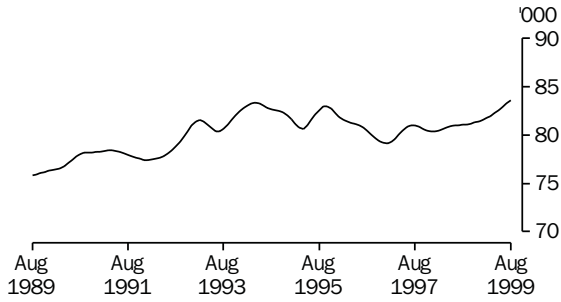
TABLE 21. LABOUR FORCE STATUS: TREND SERIES (a), ACT

Month	Employed (^{'000})	Unemployed (^{'000})	Labour force (^{'000})	Unemployment rate (per cent)	Participation rate (per cent)
MALES					
<i>August—</i>					
1995	82.6	6.9	89.5	7.7	81.0
1996	80.4	7.4	87.9	8.4	78.8
1997	81.0	7.0	88.0	8.0	78.8
<i>1998—</i>					
June	81.0	7.1	88.1	8.1	77.8
July	81.0	7.1	88.1	8.0	77.8
August	81.1	7.0	88.0	7.9	77.8
September	81.1	6.8	87.9	7.7	77.7
October	81.2	6.5	87.7	7.4	77.3
November	81.3	6.2	87.5	7.1	77.0
December	81.4	6.0	87.4	6.9	76.8
<i>1999—</i>					
January	81.6	5.9	87.4	6.7	76.6
February	81.8	5.8	87.5	6.6	76.6
March	82.0	5.8	87.7	6.6	76.7
April	82.2	5.8	88.1	6.6	76.9
May	82.6	5.9	88.5	6.7	77.2
June	82.9	6.0	88.9	6.7	77.5
July	83.3	6.0	89.3	6.8	77.7
August	83.6	6.1	89.7	6.8	77.9
FEMALES					
<i>August—</i>					
1995	74.6	4.6	79.1	5.8	66.4
1996	72.1	6.6	78.7	8.4	65.2
1997	73.0	6.3	79.2	7.9	65.7
<i>1998—</i>					
June	75.2	4.4	79.7	5.6	65.8
July	75.1	4.4	79.5	5.5	65.6
August	74.7	4.4	79.0	5.5	65.2
September	74.3	4.3	78.6	5.4	64.8
October	74.1	4.2	78.3	5.4	64.5
November	74.1	4.2	78.3	5.3	64.5
December	74.5	4.1	78.6	5.2	64.7
<i>1999—</i>					
January	74.9	4.1	79.0	5.2	65.0
February	75.1	4.2	79.4	5.3	65.2
March	75.2	4.3	79.5	5.4	65.3
April	75.3	4.2	79.5	5.3	65.2
May	75.6	4.1	79.7	5.1	65.3
June	76.1	3.9	80.0	4.8	65.6
July	76.8	3.7	80.5	4.6	65.9
August	77.5	3.6	81.1	4.4	66.3
PERSONS					
<i>August—</i>					
1995	157.2	11.5	168.6	6.8	73.5
1996	152.6	14.0	166.6	8.4	71.8
1997	154.0	13.3	167.3	7.9	72.0
<i>1998—</i>					
June	156.2	11.5	167.8	6.9	71.6
July	156.1	11.5	167.6	6.8	71.5
August	155.7	11.3	167.0	6.8	71.3
September	155.4	11.1	166.5	6.7	71.0
October	155.3	10.7	166.0	6.5	70.7
November	155.5	10.4	165.8	6.3	70.6
December	155.9	10.1	166.0	6.1	70.5
<i>1999—</i>					
January	156.4	10.0	166.4	6.0	70.6
February	156.9	10.0	166.9	6.0	70.7
March	157.2	10.0	167.2	6.0	70.8
April	157.5	10.0	167.6	6.0	70.9
May	158.2	10.0	168.2	5.9	71.1
June	159.1	9.9	168.9	5.8	71.3
July	160.1	9.7	169.8	5.7	71.6
August	161.1	9.6	170.8	5.6	72.0

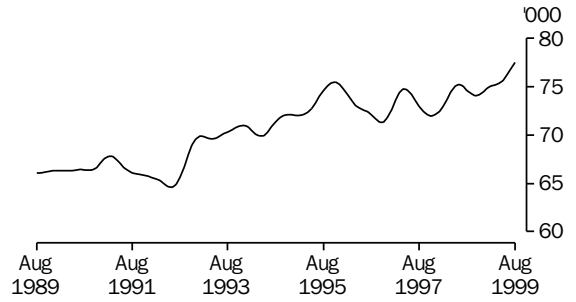
(a) See Explanatory Notes 29 and 30.

TREND SERIES, ACT(a)

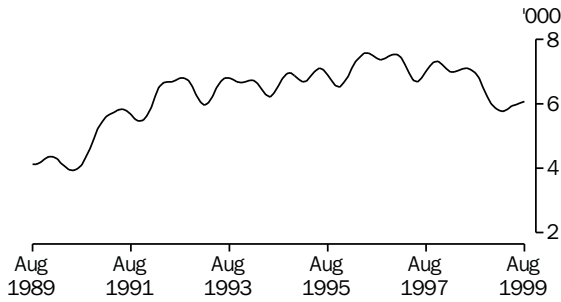
EMPLOYED MALES



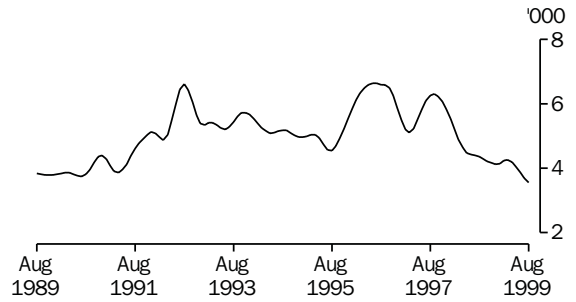
EMPLOYED FEMALES



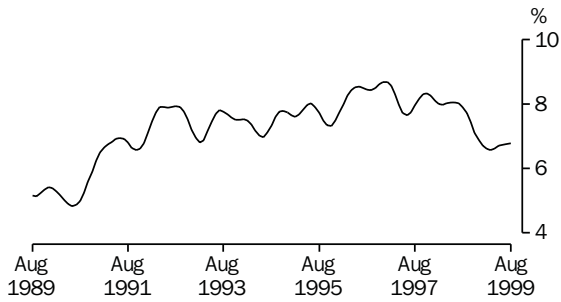
UNEMPLOYED MALES



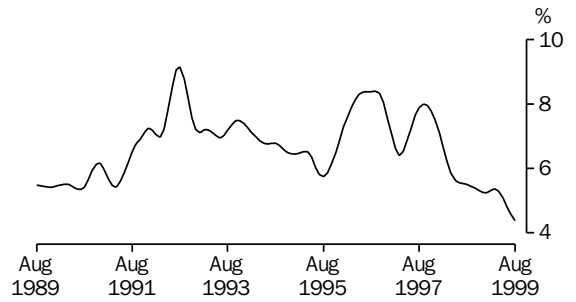
UNEMPLOYED FEMALES



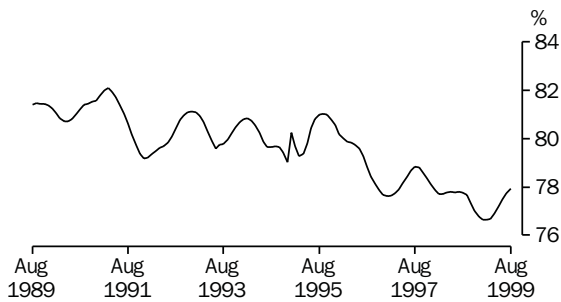
MALE UNEMPLOYMENT RATE



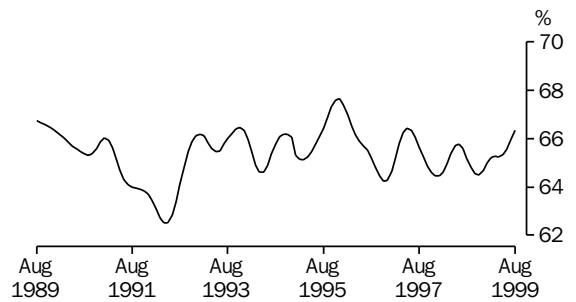
FEMALE UNEMPLOYMENT RATE



MALE PARTICIPATION RATE



FEMALE PARTICIPATION RATE



(a) Comparisons between these graphs should not be made, as their vertical axes are not similarly scaled.

TABLE 22. LABOUR FORCE STATUS: AGE, ACT, AUGUST 1999

	Persons						Total
	Females			Age group (years)			
	Males	Married	Total	15-19	20-24	25 and over	
	— '000 —						
<i>Employed</i>	83.1	43.9	77.2	10.7	19.3	130.2	160.2
Full-time workers	68.6	27.2	49.9	2.9	12.6	103.0	118.5
Part-time workers	14.4	16.7	27.3	7.8	6.8	27.2	41.7
<i>Unemployed</i>	6.3	1.6	3.4	2.8	2.1	4.7	9.7
Looking for full-time work	4.5	* 0.8	1.6	* 1.0	1.3	3.8	6.1
Looking for part-time work	1.8	* 0.8	1.8	1.8	* 0.8	* 0.9	3.6
<i>Labour force</i>	89.4	45.4	80.6	13.5	21.5	135.0	169.9
Not in labour force	25.7	23.2	41.7	9.8	4.5	53.0	67.4
Aged 15-19 attending school	4.7	* 0.0	3.5	8.3	8.3
<i>Civilian population</i>	115.1	68.6	122.2	23.4	26.0	188.0	237.3
	— per cent —						
Unemployment rate	7.1	3.4	4.2	20.9	9.9	3.5	5.7
Looking for full-time work	6.2	* 2.8	3.0	* 25.5	9.4	3.5	4.9
Participation rate	77.7	66.2	65.9	57.9	82.6	71.8	71.6
Employment/population ratio	72.2	63.9	63.1	45.8	74.4	69.3	67.5
	— number —						
Average weekly hours worked by employed persons	38.6	30.4	30.8	19.8	31.6	36.6	34.8
Average duration of unemployment (weeks)	66.7	12.4	38.2	19.1	28.0	92.1	56.7

TABLE 23. NON-INSTITUTIONALISED PERSONS(a): LABOUR FORCE STATUS, BIRTHPLACE AND YEAR OF ARRIVAL, ACT, AUGUST 1999 ('000)

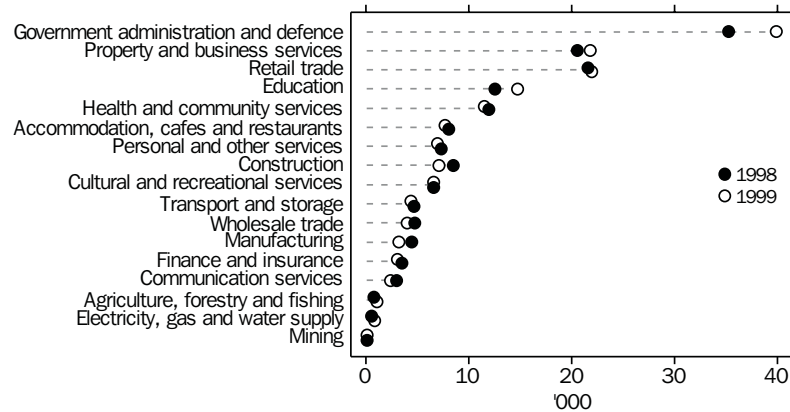
	Employed	Unemployed	Not in labour force	Labour force	Civilian population aged 15 and over
<i>Born in Australia</i>	124.8	7.2	42.5	131.9	174.5
<i>Born outside Australia</i>	35.5	2.5	22.2	38.0	60.2
Arrived before 1966	9.3	* 0.1	10.1	9.3	19.4
Arrived 1966-1970	4.6	* 0.1	2.6	4.7	7.3
Arrived 1971-1975	4.8	* 0.5	1.9	5.3	7.1
Arrived 1976-1980	3.5	* 0.2	* 1.0	3.7	4.7
Arrived 1981-1985	5.3	* 0.3	1.6	5.5	7.1
Arrived 1986-1990	3.6	* 0.9	1.3	4.6	5.8
Arrived 1991-1995	2.6	* 0.4	1.3	3.0	4.4
Arrived 1991 to survey date	4.4	* 0.5	3.7	4.9	8.7
<i>Main English speaking countries</i>	13.7	* 0.9	7.9	14.6	22.5
Arrived before 1966	3.7	* 0.1	4.2	3.8	8.0
Arrived 1966-1970	2.6	* 0.0	1.1	2.6	3.7
Arrived 1971-1975	2.5	* 0.2	* 0.8	2.7	3.4
Arrived 1976-1980	1.2	* 0.1	* 0.1	1.3	1.4
Arrived 1981-1985	1.8	* 0.2	* 0.5	2.0	2.5
Arrived 1986-1990	* 0.8	* 0.3	* 0.4	1.1	1.5
Arrived 1991-1995	* 0.4	* 0.0	* 0.1	* 0.4	* 0.5
Arrived 1991 to survey date	1.2	* 0.1	* 0.8	1.2	2.1
<i>Other than Main English speaking countries</i>	21.7	1.6	14.3	23.4	37.7
Arrived before 1966	5.5	* 0.0	5.9	5.5	11.4
Arrived 1966-1970	2.0	* 0.1	1.5	2.1	3.6
Arrived 1971-1975	2.3	* 0.3	1.1	2.6	3.7
Arrived 1976-1980	2.3	* 0.1	* 1.0	2.4	3.3
Arrived 1981-1985	3.5	* 0.1	1.1	3.6	4.7
Arrived 1986-1990	2.8	* 0.7	* 0.8	3.5	4.4
Arrived 1991-1995	2.2	* 0.4	1.3	2.7	3.9
Arrived 1991 to survey date	3.3	* 0.4	2.9	3.7	6.6
Total	160.2	9.7	64.8	169.9	234.7

(a) Excludes boarding school pupils.

**TABLE 24. EMPLOYED PERSONS: INDUSTRY, ACT
(’000)**

Industry division	Average for year ending					
	August 1998			August 1999		
	Males	Females	Persons	Males	Females	Persons
Industry—						
Agriculture, forestry and fishing	* 0.6	* 0.2	* 0.8	* 0.6	* 0.5	1.1
Mining	* 0.1	* 0.0	* 0.1	* 0.1	* 0.0	* 0.1
Manufacturing	3.0	1.5	4.5	2.2	1.1	3.2
Electricity, gas and water supply	* 0.5	* 0.1	* 0.6	* 0.7	* 0.3	* 0.9
Construction	7.4	1.1	8.5	6.1	* 1.0	7.1
Wholesale trade	3.4	1.4	4.8	2.9	* 1.0	4.0
Retail trade	11.4	10.2	21.6	11.4	10.6	22.0
Accommodation, cafes and restaurants	3.8	4.3	8.1	3.7	4.0	7.7
Transport and storage	3.5	1.3	4.7	3.4	* 1.0	4.4
Communication services	1.7	1.3	3.0	1.5	* 0.9	2.4
Finance and insurance	1.2	2.3	3.5	* 1.0	2.1	3.1
Property and business services	11.4	9.3	20.6	12.8	9.0	21.8
Government administration and defence	18.2	17.1	35.3	21.4	18.5	39.9
Education	4.5	8.1	12.6	5.5	9.3	14.8
Health and community services	2.3	9.7	12.0	1.9	9.6	11.5
Cultural and recreational services	3.9	2.7	6.6	3.2	3.4	6.6
Personal and other services	3.9	3.4	7.3	3.5	3.5	7.0
Total employed	80.9	73.9	154.8	82.1	75.8	157.9

AVERAGE EMPLOYMENT BY INDUSTRY DIVISION, ACT, YEAR ENDING AUGUST



**TABLE 25. EMPLOYED PERSONS: OCCUPATION, ACT
(’000)**

Major occupation group	Average for year ending					
	August 1998			August 1999		
	Males	Females	Persons	Males	Females	Persons
Occupation—						
Managers and administrators	9.1	4.3	13.4	10.3	4.1	14.3
Professionals	19.6	17.4	37.0	19.5	18.7	38.2
Associate professionals	13.2	8.7	21.9	13.7	10.5	24.2
Tradespersons and related workers	13.3	1.8	15.1	11.7	1.5	13.2
Advanced clerical and service workers	* 0.7	5.6	6.4	* 0.4	5.1	5.5
Intermediate clerical, sales and service workers	8.3	21.9	30.2	9.0	21.3	30.3
Intermediate production and transport workers	5.0	* 0.3	5.3	4.9	* 0.5	5.4
Elementary clerical, sales and service workers	7.0	11.6	18.6	8.1	11.2	19.3
Labourers and related workers	4.6	2.4	6.9	4.6	2.9	7.5
Total employed	80.9	73.9	154.8	82.1	75.8	157.9

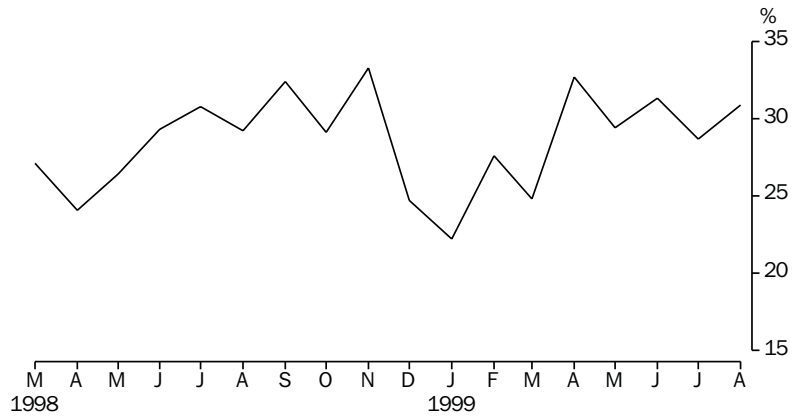
AVERAGE EMPLOYMENT BY OCCUPATION GROUP, ACT, YEAR ENDING AUGUST



TABLE 26. LONG-TERM UNEMPLOYMENT, ACT

Month	Long-term unemployment									Long-term unemployment as a proportion of total unemployment		
	52 weeks and under 104			104 weeks and over			Total			Males (per cent)	Females (per cent)	Persons (per cent)
	Males (<i>'000</i>)	Females (<i>'000</i>)	Persons (<i>'000</i>)	Males (<i>'000</i>)	Females (<i>'000</i>)	Persons (<i>'000</i>)	Males (<i>'000</i>)	Females (<i>'000</i>)	Persons (<i>'000</i>)			
<i>1998—</i>												
June	1.5	* 0.3	1.7	* 0.7	* 0.5	1.2	2.2	* 0.7	2.9	31.9	23.3	29.3
July	1.2	* 0.4	1.6	1.1	* 0.8	1.9	2.3	1.3	3.6	31.1	30.2	30.8
August	1.3	* 0.5	1.8	* 0.8	* 0.5	1.2	2.1	* 1.0	3.1	35.0	22.2	29.2
September	* 0.9	* 0.4	1.4	1.7	* 0.4	2.1	2.6	* 0.8	3.5	41.3	17.8	32.4
October	1.1	* 0.5	1.6	* 1.0	* 0.4	1.4	2.1	* 0.9	3.0	32.3	23.7	29.1
November	1.5	* 0.5	1.9	1.2	* 0.2	1.4	2.7	* 0.7	3.3	42.2	20.6	33.3
December	1.2	* 0.2	1.4	* 0.6	* 0.3	* 0.9	1.9	* 0.5	2.4	32.2	13.2	24.7
<i>1999—</i>												
January	* 1.0	* 0.3	1.3	* 0.9	* 0.3	1.1	1.8	* 0.5	2.4	29.5	10.6	22.2
February	1.1	* 0.6	1.7	1.1	* 0.3	1.5	2.2	* 1.0	3.2	36.1	18.2	27.6
March	1.2	* 0.8	2.1	* 0.5	* 0.3	* 0.8	1.8	1.1	2.9	27.7	21.6	24.8
April	1.5	* 0.3	1.9	* 0.8	* 0.5	1.3	2.4	* 0.8	3.2	38.7	22.2	32.7
May	* 0.9	* 0.6	1.5	* 0.7	* 0.7	1.4	1.6	1.3	3.0	27.6	29.5	29.4
June	* 0.8	* 0.3	1.1	* 0.9	* 0.6	1.5	1.7	* 1.0	2.6	36.2	27.8	31.3
July	* 0.7	* 0.3	* 1.0	1.1	* 0.4	1.5	1.8	* 0.7	2.5	30.5	25.0	28.7
August	* 0.8	* 0.4	1.2	1.4	* 0.5	1.8	2.1	* 0.8	3.0	33.3	23.5	30.9

LONG-TERM UNEMPLOYED AS A PROPORTION OF TOTAL UNEMPLOYED, ACT



EXPLANATORY NOTES

INTRODUCTION

1 This publication contains estimates of the labour force derived from the Labour Force Survey (LFS) component of the monthly population survey, which is conducted on a sample basis throughout Australia.

THE POPULATION SURVEY

2 This survey consists of the LFS and, in most months, one or more supplementary topics. The survey is based on a multi-stage area sample of private dwellings (houses, flats, etc.) and non-private dwellings (hotels, motels, etc.) and covers 1 in 300 of the population of NSW. The information is obtained from the occupants of selected dwellings by specially trained interviewers. The interviews are generally conducted during the two weeks beginning on the Monday between the 6th and 12th of each month. The information obtained relates to the week before the interview (i.e. the reference week).

TELEPHONE INTERVIEWING

3 The ABS has introduced the use of telephone interviewing into the LFS. Households selected for the LFS are interviewed each month for eight months, with one-eighth of the sample being replaced each month. The first interview is conducted face-to-face with subsequent interviews conducted by telephone (if acceptable to the respondent). Telephone interviewing was phased in from August 1996 to February 1997.

SCOPE

4 The LFS includes all persons aged 15 years and over, except:

- members of the permanent defence forces;
- certain diplomatic personnel of overseas governments, customarily excluded from census and estimated populations;
- overseas residents in Australia; and
- members of non-Australian defence forces (and their dependants) stationed in Australia.

SURVEY SAMPLE REDESIGN

5 The LFS sample was reselected using information collected in the 1996 Census of Population and Housing. The new sample was phased in over the eight-month period from September 1997 to April 1998.

6 For further details, see *Information Paper: Labour Force Survey Sample Design* (Cat. no. 6269.0).

POPULATION BENCHMARKS

7 LFS estimates are calculated in such a way as to add up to independent estimates of the civilian population aged 15 and over (population benchmarks). From February 1999, labour force estimates have been compiled using benchmarks based on the results of the 1996 Census of Population and Housing. Small revisions were made to many of the historical estimates from January 1995 to January 1999.

DEFINITIONS

8 The labour force category to which a person is assigned depends on the actual activity undertaken during the reference week (i.e. whether working, looking for work, etc.). The following definitions, which conform closely to the international standard definitions specified by the International Labour Office (ILO), relate only to those persons within the scope of the survey.

9 *Employed persons* comprise civilians aged 15 years and over who, during the reference week:

- worked for one hour or more for pay, profit, commission or payment in kind (including employees, employers and own account workers) in a job or business, or on a farm; or
- worked for one hour or more without pay in a family business or on a farm (i.e. contributing family workers); or
- were employees who had a job but were not at work and were: on paid leave; on leave without pay for less than four weeks up to the end of the reference week; stood down without pay because of bad weather or plant breakdown at their place of employment for less than four weeks up to the end of the reference week; on strike or locked out; on workers' compensation and expected to be returning to their job; or receiving wages or salary while undertaking full-time study; or
- were employers, own account workers or contributing family workers who had a job, business or farm, but were not at work.

10 Prior to April 1986, contributing family workers who worked for 1–14 hours were excluded from the category of employed persons.

11 Employed persons can be classified into:

- *full-time workers*, i.e. those who usually worked 35 hours or more a week (in all jobs) and those who, although usually part-time workers, worked 35 hours or more during the reference week; and
- *part-time workers*, i.e. those who usually worked less than 35 hours a week and who did so during the reference week.

12 *Unemployed persons* are those aged 15 years and over who were not employed during the reference week, and:

- had actively looked for full-time or part-time work at any time in the four weeks up to the end of the reference week, and:
 - were available for work in the reference week, or would have been available except for temporary illness (i.e. lasting for less than four weeks to the end of the reference week); or
 - were waiting to start a new job within four weeks from the end of the reference week and would have started in the reference week if the job had been available then; or

- were waiting to be called back to a full-time or part-time job from which they had been stood down without pay for less than four weeks up to the end of the reference week (including the whole of the reference week) for reasons other than bad weather or plant breakdown.

13 *Actively looking for work* includes writing, telephoning or applying in person to an employer for work; answering an advertisement for a job; checking factory notice-boards or the touchscreens at the Centrelink offices; being registered with Centrelink as a jobseeker; checking or registering with any other employment agency; advertising or tendering for work; and contacting friends or relatives.

14 *The unemployment rate* for any group is the number of unemployed persons expressed as a percentage of the labour force in the same group.

15 *The labour force* comprises persons who were employed or unemployed as defined above.

16 *Long-term unemployed* comprises persons unemployed for a period of 52 weeks or more.

17 *Persons not in the labour force* are those who, during the reference week, were not in the categories employed or unemployed as defined above.

18 *The participation rate* for any group is the labour force expressed as a percentage of the civilian population aged 15 years and over in the same group.

19 *Duration of unemployment* is the period from the time the person began looking for work or was stood down to the end of the reference week.

20 *Unemployed persons classified by industry and occupation.* Unemployed persons who had worked full-time for two weeks or more in the last two years are classified according to the industry and occupation of their most recent full-time job.

21 *Industry classification.* From August 1994, LFS industry data have been classified according to the *Australian and New Zealand Standard Industrial Classification (ANZSIC), 1993* (Cat. no. 1292.0).

22 *Occupation classification.* From August 1996, occupation data have been classified according to the *Australian Standard Classification of Occupations (ASCO), Second Edition* (Cat. no. 1220.0).

23 *Marital status.* In the LFS, persons are classified as married or not married. Persons are classified as married if they are reported as being married (including de facto) and their spouse was a usual resident of the household at the time of the survey.

DEFINITIONS *continued*

24 *Persons attending school or a tertiary educational institution.*

Persons attending school comprise those aged 15–19 years who, during the reference week, were enrolled full-time at secondary or high schools. Persons attending a tertiary educational institution comprise those aged 15–24 years who were enrolled full-time at universities, other institutions of higher education, TAFE colleges and theological colleges.

25 *Employment/population ratio.* For any group, the number of employed persons expressed as a percentage of the civilian population aged 15 years and over in the same group.

STATISTICAL AREAS

26 The regional structure for NSW used in tables 16–19 is based on the Statistical Region structure of the *Australian Standard Geographical Classification (ASGC)* (Cat. no. 1216.0).

27 Changes were made to labour force regions in NSW from September 1997. Blacktown–Baulkham Hills SR was split up with Blacktown being merged with Outer Western Sydney SR to form Outer Western Sydney SR and Blacktown (C) and Baulkham Hills being merged with Hornsby–Ku-ring-gai SR to form Hornsby–Ku-ring-gai SR and Baulkham Hills (A). In addition, Northern, Far West–North Western and Central West SRs now include the Far West Statistical Division, previously excluded. This has resulted in a series break in the data for this area.

28 For further details, see *Information Paper: Regional Labour Force Statistics, September 1997* (Cat. no. 6262.0).

SEASONAL ADJUSTMENT
AND TREND ESTIMATION

29 Seasonal adjustment is a means of removing the estimated effects of normal seasonal variation from the series so that the effects of other influences on the series can be more clearly recognised.

30 Smoothing seasonally adjusted series produces a measure of the underlying trend by reducing the impact of the irregular component of the series. The trend estimates are derived by applying a 13-term Henderson-weighted moving average to the respective seasonally adjusted series. While this smoothing technique enables estimates to be produced which include the latest month, it does result in revisions to the most recent months as additional observations become available.

31 Seasonally adjusted series for NSW appear in table 2. Trend estimates for NSW and ACT appear in tables 2 and 21 respectively. Seasonally adjusted data is not available for the ACT.

RELIABILITY OF THE
ESTIMATES

32 Estimates are subject to sampling and non-sampling errors. See the Technical note on pages 58–60 for more information.

RELATED PUBLICATIONS

33 Users may also wish to refer to the following related publications which are available from ABS Bookshops:

- *Australian Capital Territory at a Glance*, Cat. no. 1314.8, issued annually.
- *Australian Capital Territory Business Indicators*, Cat. no. 1303.8, issued monthly.
- *Australian Capital Territory Statistical Summary*, Cat. no. 1307.8, issued annually.
- *Information Paper: Labour Force Survey—Sample Design*, Cat. no. 6269.0.
- *Information Paper: Regional Labour Force Statistics, September 1997*, Cat. no. 6262.0
- *Labour Force, Australia, Preliminary*, Cat. no. 6202.0, issued monthly.
- *Labour Force, Australia*, Cat. no. 6203.0, issued monthly.

ADDITIONAL DATA

34 The ABS can also make available information which is not published. In general, a charge is made for providing unpublished information.

ROUNDING

35 Figures have been rounded and discrepancies may occur between sums of the component items and the totals shown.

APPENDIX

SUPPLEMENTARY TOPICS

Although emphasis in the population survey is placed on the regular collection of data on demographic and labour force characteristics, supplementary and special surveys of particular aspects of the labour force are carried out from time to time.

It was ABS practice to release statistics from supplementary and special surveys in *Labour Force, Australia* (Cat. no. 6203.0). This practice ceased with the release of the February 1996 issue of *Labour Force, Australia*. For future releases of supplementary labour data, separate publications containing summary results and key findings will be produced.

Equivalent tables at the State level are available on microfiche. In addition, other unpublished data can be provided to meet special requirements.

CATALOGUE/ PRODUCT NO.	TITLE OF PUBLICATION/STANDARD DATA SERVICE	PRICE(a) \$
6206.0	Labour Force Experience, Australia, February 1997	18.50
6209.0	Labour Mobility, Australia, February 1998	18.50
6216.0	Multiple Jobholding, Australia, August 1997	18.50
6220.0	Persons not in the Labour Force, Australia, September 1998	19.00
6222.0	Job Search Experience of Unemployed Persons, Australia, July 1998	18.50
6224.0	Labour Force Status and Other Characteristics of Families, Australia, June 1998	19.00
6227.0	Transition from Education to Work, Australia, May 1998	19.00
6238.0	Retirement and Retirement Intentions, Australia, November 1997	21.00
6245.0	Successful and Unsuccessful Job Search Experience, Australia, July 1998	18.50
6247.1	Part-time, Casual and Temporary Employment, NSW, October 1997	16.00
6250.0	Labour Force Status and Other Characteristics of Migrants, Australia, November 1996	15.50
6254.0	Career Experience, Australia, November 1996	16.00
6265.0	Underemployed Workers, Australia, September 1997	19.00
6266.0	Retrenchment and Redundancy, Australia, July 1997	21.00
6272.0	Participation in Education, Australia, September 1998	18.50
6275.0	Persons Employed at Home, Australia, September 1995	14.50
6286.0	Australians' Employment and Unemployment Patterns, 1994–1996	25.00
6310.0	Employee Earnings, Benefits and Trade Union Membership, Australia, August 1998	21.00
6342.0	Working Arrangements, Australia, August 1997	19.00

(a) Prices quoted are subject to revision

MAJOR STATISTICAL REGION	STATISTICAL REGION/ STATISTICAL REGION SECTOR	STATISTICAL LOCAL AREA
SYDNEY	Inner Sydney and Inner Western Sydney (SRs)	Ashfield (A)
		Botany (A)
		Burwood (A)
		Concord (A)
		Drummoyne (A)
		Leichhardt (A)
		Marrickville (A)
		South Sydney (C)
		Strathfield (A)
		Sydney (C)—Inner Sydney (C)—Remainder
	Inner Sydney (SR)	Botany (A)
		Leichhardt (A)
		Marrickville (A)
		South Sydney (C)
		Sydney (C)—Inner Sydney (C)—Remainder
	Eastern Suburbs (SR)	Randwick (C)
		Waverley (A)
		Woollahra (A)
	St George–Sutherland (SR)	Hurstville (C)
		Kogarah (A)
		Rockdale (A)
		Sutherland Shire (A)
	Canterbury–Bankstown (SR)	Bankstown (C)
		Canterbury (A)
	Fairfield–Liverpool and Outer South Western Sydney (SRs)	Camden (A)
		Campbelltown (C)
		Fairfield (C)
		Liverpool (C)
		Wollondilly (A)
	Fairfield–Liverpool (SR)	Fairfield (C)
		Liverpool (C)
	Central Western Sydney (SR)	Auburn (A)
		Holroyd (C)
		Parramatta (C)
	Outer Western Sydney (SR) and Blacktown (C)	Blacktown (C)
		Blue Mountains (C)
		Hawkesbury (C)
		Penrith (C)

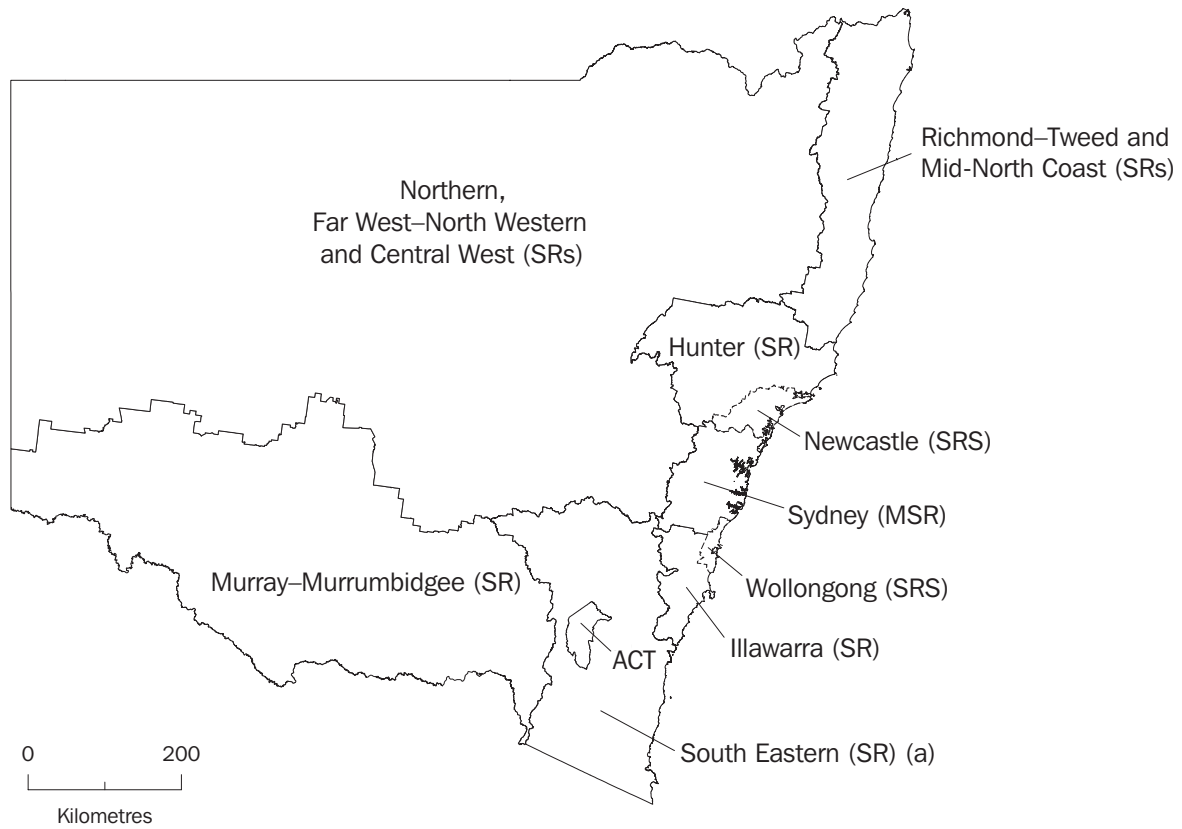
MAJOR STATISTICAL REGION	STATISTICAL REGION/ STATISTICAL REGION SECTOR	STATISTICAL LOCAL AREA
SYDNEY <i>continued</i>	Lower Northern Sydney (SR)	Hunter's Hill (A) Lane Cove (A) Mosman (A) North Sydney (A) Ryde (C) Willoughby (C)
	Hornsby–Ku-ring-gai (SR) and Baulkham Hills (A)	Baulkham Hills (A) Hornsby (A) Ku-ring-gai (A)
	Northern Beaches (SR)	Manly (A) Pittwater (A) Warringah (A)
	Gosford–Wyong (SR)	Gosford (C) Wyong (A)
BALANCE OF NSW (b)	Hunter (SR)	Cessnock (C) Dungog (A) Gloucester (A) Great Lakes (A) Lake Macquarie (C) Maitland (C) Merriwa (A) Murrurundi (A) Muswellbrook (A) Newcastle (C)—Inner Newcastle (C)—Remainder Port Stephens (A) Scone (A) Singleton (A)
	Newcastle (SRS)	Cessnock (C) Lake Macquarie (C) Maitland (C) Newcastle (C)—Inner Newcastle (C)—Remainder Port Stephens (A)

MAJOR STATISTICAL REGION	STATISTICAL REGION/ STATISTICAL REGION SECTOR	STATISTICAL LOCAL AREA
BALANCE OF NSW <i>continued</i>	Illawarra and South Eastern (SRs)	Bega Valley (A)
		Bombala (A)
		Boorowa (A)
Cooma–Monaro (A)		
Crookwell (A)		
Eurobodalla (A)		
Goulburn (C)		
Gunning (A)		
Harden (A)		
Kiama (A)		
Mulwaree (A)		
Queanbeyan (C)		
Shellharbour (A)		
Shoalhaven (C)		
Snowy River (A)		
Tallaganda (A)		
Wingecarribee (A)		
Wollongong (C)		
Yarrowlumla (A)— Part A		
Yarrowlumla (A)—Part B		
Yass (A)		
Young (A)		
	Illawarra (SR)	Kiama (A)
		Shellharbour (A)
		Shoalhaven (C)
		Wingecarribee (A)
		Wollongong (C)
	Richmond–Tweed and Mid-North Coast (SRs)	Ballina (A)
		Bellingen (A)
		Byron (A)
		Casino (A)
		Coffs Harbour (C)
		Copmanhurst (A)
		Grafton (C)
		Greater Taree (C)
		Hastings (A)
		Kempsey (A)
		Kyogle (A)
		Lismore (C)
		Lord Howe Island
		Macleay (A)
		Nambucca (A)
		Nymboida (A)
		Richmond River (A)
		Tweed (A)—Part A
	Tweed (A)—Part B	
	Ulmarra (A)	

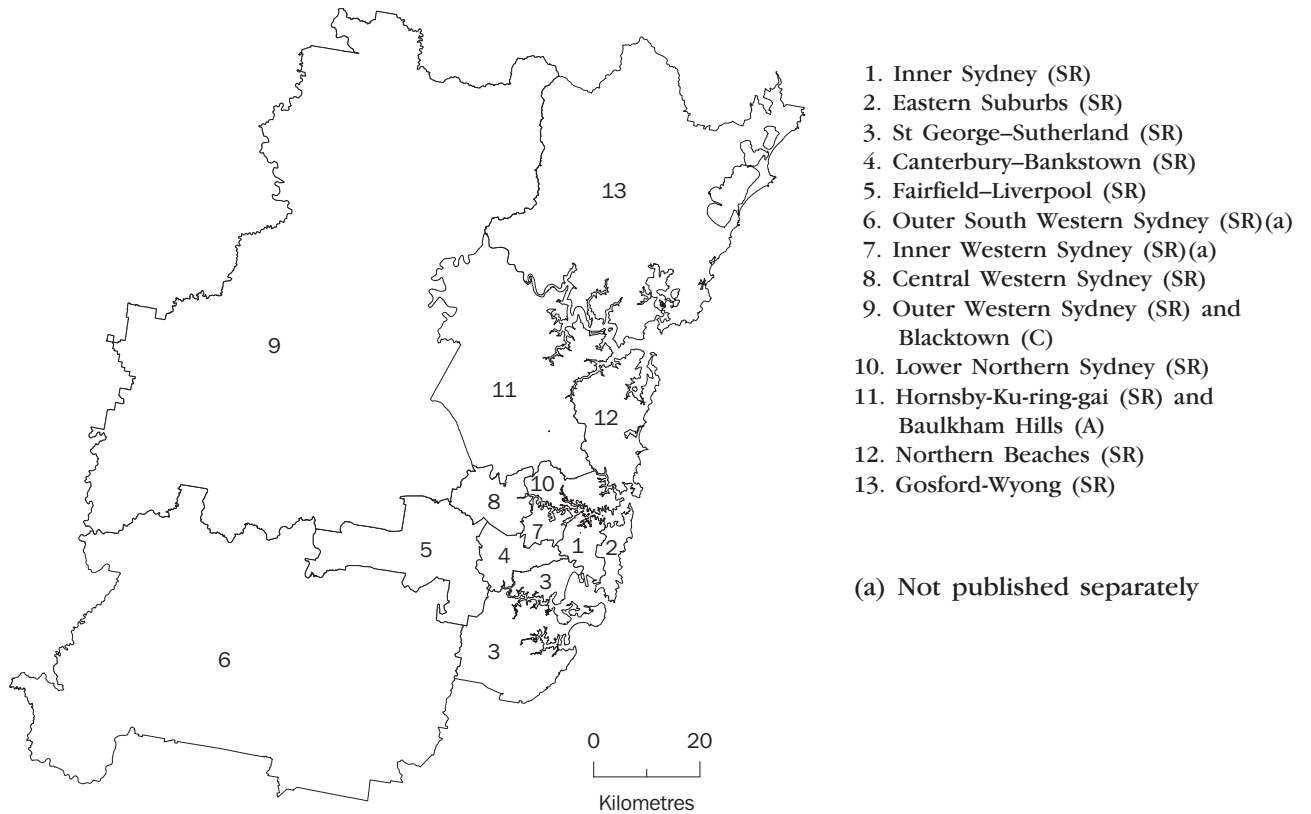
MAJOR STATISTICAL REGION	STATISTICAL REGION/ STATISTICAL REGION SECTOR	STATISTICAL LOCAL AREA
BALANCE OF NSW <i>continued</i>	Northern, Far West–North Western and Central West (SRs)	Armidale (C) Barraba (A) Bathurst (C) Bingara (A) Bland (A) Blayney (A)—Part A Blayney (A)—Part B Bogan (A) Bourke (A) Brewarrina (A) Broken Hill (C) Central Darling (A) Cabonne (A)—Part A Cabonne (A)—Part B Cabonne (A)—Part C Cobar (A) Coolah (A) Coonabarabran (A) Coonamble (A) Cowra (A) Dubbo (C) Dumaresq (A) Evans (A)—Part A Evans (A)—Part B Forbes (A) Gilgandra (A) Glen Innes (A) Greater Lithgow (C) Gunnedah (A) Guyra (A) Inverell (A)—Part A Inverell (A)—Part B Lachlan (A) Manilla (A) Moree Plains (A) Mudgee (A) Narrabri (A) Narromine (A) Nundle (A) Oberon (A) Orange (C) Parkes (A) Parry (A) Quirindi (A) Rylstone (A) Severn (A) Tamworth (C) Tenterfield (A) Unincorporated Far West Uralla (A) Walcha (A) Walgett (A) Warren (A) Weddin (A) Wellington (A) Yallaroi (A)

MAJOR STATISTICAL REGION	STATISTICAL REGION/ STATISTICAL REGION SECTOR	STATISTICAL LOCAL AREA
BALANCE OF NSW <i>continued</i>	Murray–Murrumbidgee (SR)	Albury (C) Balranald (A) Berrigan (A) Carrathool (A) Conargo (A) Coolamon (A) Cootamundra (A) Corowa (A) Culcairn (A) Deniliquin (A) Griffith (C) Gundagai (A) Hay (A) Holbrook (A) Hume (A) Jerilderie (A) Junee (A) Leeton (A) Lockhart (A) Murray (A) Murrumbidgee (A) Narrandera (A) Temora (A) Tumbarumba (A) Tumut (A) Urana (A) Wagga Wagga (C) Wakool (A) Wentworth (A) Windouran (A)
NOT APPLICABLE	Australian Capital Territory and South Eastern (SRs)	Australian Capital Territory Bega Valley (A) Bombala (A) Boorowa (A) Cooma–Monaro (A) Crookwell (A) Eurobodalla (A) Goulburn (C) Gunning (A) Harden (A) Mulwaree (A) Queanbeyan (C) Snowy River (A) Tallaganda (A) Yarrowlumla (A)—Part A Yarrowlumla (A)—Part B Yass (A) Young (A)

REGIONS OF NSW AND ACT



REGIONS OF SYDNEY (MSR)



TECHNICAL NOTE DATA RELIABILITY

SOURCES OF ERROR

There are a number of possible sources of error in sample surveys and these can be classified into two types: sampling error; and non-sampling error.

NON-SAMPLING ERRORS

Non-sampling errors may arise as a result of errors in the reporting, recording or processing of the data and can occur even if there is a complete enumeration of the population. Non-sampling errors can be introduced through: inadequacies in the questionnaire; non-response; inaccurate reporting by respondents; errors in the application of survey procedures; incorrect recording of answers; and errors in data entry and processing.

It is difficult to measure the size of the non-sampling errors and the extent of these errors could vary considerably in significance from survey to survey, and from question to question. However, every effort is made in the design of the survey and development of survey procedures to minimise the effect of these errors.

SAMPLING ERRORS

Sampling error is the error which occurs by chance because the data were only obtained from a sample, not the entire population.

Standard errors of estimates

One measure of the variability of estimates which occurs as a result of surveying only a sample of the population is the standard error (SE). There are about two chances in three that a survey estimate is within one standard error of the figure that would have been obtained if all persons had been included and about 19 chances in 20 that it is within two standard errors. That is, there are 19 chances in 20 that the true estimate is in the range:

$$X - 2 \times SE(X) \text{ to } X + 2 \times SE(X)$$

(where X is the estimate)

The standard error of an estimate can be obtained from the tables on pages 61–63. Linear interpolation should be used to calculate the standard error of estimates falling between the sizes of estimates listed in the table (see example on page 60).

In the tables in this publication, only estimates with relative standard errors of 25% or less, and percentages based on such estimates, are considered sufficiently reliable for most purposes. However, estimates and percentages with larger relative standard errors have been included and are preceded by an asterisk (e.g. *3.4) to indicate they are subject to high standard errors and should be used with caution.

Standard errors of estimates *continued* The standard error can also be expressed as a percentage of the estimate and this is known as the relative standard error (RSE). The RSE is determined by dividing the standard error of an estimate SE(X) by the estimate X and expressing it as a percentage. That is:

$$RSE(X) = \frac{SE(X) \times 100}{X}$$

(where X is the estimate)

The look up list on the following page provides a guide for the calculation of standard errors and relative standard errors for a range of statistics.

CALCULATING STANDARD ERRORS

The methods described below refer to the calculation of standard errors for NSW estimates. Standard errors of ACT estimates should be calculated from the table on page 63.

MEASURE OF RELIABILITY TO BE DETERMINED	METHOD
Standard errors of estimates of employed persons.	Determine the SE from the table on page 61 directly.
Standard errors of estimates of unemployed persons.	Multiply the SE from the table on page 61 by 1.06.
Standard errors of estimates of persons not in the labour force.	Multiply the SE from the table on page 61 by 1.1.
Standard errors of rates (e.g. the unemployment rate which is based on the number of unemployed persons expressed as a percentage of the number of persons in the labour force).	Determine the RSE of the numerator (X) and the denominator (Y) then apply the following formula: $RSE \left(\frac{X}{Y} \right) = \sqrt{[RSE(X)]^2 - [RSE(Y)]^2}$
Standard error of average duration of unemployment.	Determine the RSE for the number of persons on which the average is based and multiply this by 1.3.
Standard error of median duration of unemployment.	Determine the RSE for the number of persons on which the average is based and multiply this by 2.0.
Standard error of monthly movements.	From the table on page 62, look up the SE of the larger estimate.
Standard error of quarterly movements.	Determine the standard error of the larger estimate from the table on page 61 and multiply this by 1.11.
Standard error of annual movements.	Determine the standard error of the larger estimate from the table on page 61 and multiply this by 1.3.

LINEAR INTERPOLATION

Linear interpolation is used to determine the standard error of an estimate which falls between two values listed in the size of estimate column in the tables on page 61 or 63. Linear interpolation is best described using an example. In May 1999, there were 723,300 (X_e) employed persons working part-time in NSW. This estimate falls between the values 500,000 (X_l) and 1,000,000 (X_u) in the table on page 60.

The standard error of the estimate is determined as follows. Firstly calculate

$$\begin{aligned} F &= \frac{X_e - X_l}{X_u - X_l} \\ &= \frac{723,300 - 500,000}{1,000,000 - 500,000} \\ &= 0.45 \end{aligned}$$

Secondly, calculate the standard error of the estimate, SE(X_e) thus:

$$\begin{aligned} SE(X_e) &= SE(X_l) + (F \times [SE(X_u) - SE(X_l)]) \\ &= 8,350 + (0.45 \times [11,650 - 8,350]) \\ &= 9,835 \end{aligned}$$

Therefore the standard error of the number of employed persons working part-time in NSW in May 1999 is 9,835.

STANDARD ERRORS

LEVEL OF ESTIMATES(a), NSW

REGIONS IN SYDNEY (MSR)

Size of estimate	NSW	Sydney (MSR)	Balance of NSW (MSR)	Inner Sydney and Inner Western	Inner Sydney	Eastern Suburbs	St George-Sutherland	Canterbury-Bankstown	Fairfield-Liverpool and Outer South Western	Fairfield-Liverpool
				Sydney (SRs)	(SR)	(SR)	(SR)	(SR)	(SR)	
500	320	440	400	310	290	240	200	260	310	300
1 000	520	630	640	460	440	360	310	390	460	450
3 000	1 000	1 060	1 060	880	830	680	590	740	880	850
5 000	1 350	1 340	1 340	1 180	1 110	910	790	990	1 180	1 140
10 000	1 900	1 820	1 810	1 740	1 630	1 340	1 160	1 460	1 730	1 680
20 000	2 600	2 440	2 420	2 540	2 380	1 960	1 700	2 130	2 530	2 450
50 000	3 700	3 500	3 520	4 130	3 880	3 190	2 760	3 470	4 120	3 990
100 000	4 600	4 500	4 600	5 900	5 600	4 600	4 000	5 000	5 900	5 700
200 000	5 750	5 800	6 000	8 400	7 900	6 500	5 600	7 100	8 400	8 100
300 000	6 700	6 700	6 900	10 300	9 600	7 900	6 900	8 600	10 200	9 900
500 000	8 350	7 900	8 300	13 200	12 400	10 200	8 800	11 100	13 100	12 700
1 000 000	11 650	9 800	10 600							
2 000 000	17 150	12 000	13 300							
5 000 000	30 750	15 300	17 700							

REGIONS IN SYDNEY (MSR)—continued

Size of estimates	Central Western Sydney	Outer Western Sydney (SR) and Blacktown (C)	Lower Northern Sydney	Hornsby-Ku-ring-gai (SR) and Baulkham Hills (A)	Northern Beaches	Gosford Wyong(SR)
	(SR)	(C)	(SR)	(A)	(SR)	(SR)
500	230	260	270	260	260	230
1 000	340	400	410	390	400	350
3 000	650	760	770	750	760	670
5 000	870	1 010	1 030	1 000	1 010	890
10 000	1 290	1 490	1 520	1 480	1 490	1 310
20 000	1 880	2 180	2 220	2 150	2 170	1 920
50 000	3 060	3 550	3 620	3 510	3 540	3 120
100 000	4 400	5 100	5 200	5 000	5 100	4 500
200 000	6 200	7 200	7 300	7 100	7 200	6 400
300 000	7 600	8 800	9 000	8 700	8 800	7 800

REGIONS IN BALANCE OF NSW (MSR)

Size of estimates	Hunter	Newcastle	Illawarra and South Eastern	Illawarra	Wollongong	Richmond-Tweed and Mid North Coast	Northern, Far West and North Western	Murray-Murrumbidgee
	(SR)	(SRS)	(SRS)	(SR)	(SRS)	(SRs)	(SRs)	(SR)
500	300	280	310	290	240	340	330	340
1 000	450	420	470	440	360	510	500	520
3 000	850	810	900	830	680	970	940	990
5 000	1 140	1 080	1 200	1 110	910	1 300	1 260	1 320
10 000	1 680	1 590	1 770	1 630	1 340	1 920	1 860	1 950
20 000	2 450	2 320	2 580	2 390	1 950	2 800	2 720	2 850
50 000	4 000	3 780	4 210	3 890	3 180	4 560	4 430	4 640
100 000	5 700	5 400	6 000	5 600	4 600	6 500	6 300	6 600
200 000	8 100	7 700	8 600	7 900	6 500	9 300	9 000	9 400
300 000	9 900	9 400	10 500	9 700	7 900	11 300	11 000	11 500

(a) Standard errors of estimates from September 1997. For standard errors for earlier periods, see previous issues of this publication.

STANDARD ERRORS

MOVEMENT ESTIMATES(a), NSW

REGIONS IN SYDNEY (MSR)

<i>Size of estimates</i>	<i>NSW</i>	<i>Sydney (MSR)</i>	<i>Balance of NSW (MSR)</i>	<i>Inner Sydney and Inner Western Sydney (SRs)</i>	<i>Inner Sydney (SR)</i>	<i>Eastern Suburbs (SR)</i>	<i>St George-Sutherland (SR)</i>	<i>Canterbury-Bankstown (SR)</i>	<i>Western Sydney (SRs)</i>	<i>Fairfield-Liverpool and Outer South (SRs)</i>	<i>Fairfield-Liverpool (SR)</i>
500	580	600	580	310	280	210	200	250	270		240
1 000	730	750	720	420	380	290	270	340	370		340
3 000	1 060	1 070	1 030	700	640	490	460	570	620		560
5 000	1 260	1 270	1 220	890	810	620	580	720	790		710
10 000	1 590	1 600	1 500	1 250	1 100	850	800	1 000	1 100		1 000
20 000	2 010	2 000	1 900	1 700	1 550	1 200	1 100	1 350	1 500		1 350
50 000	2 740	2 700	2 550	2 600	2 350	1 800	1 700	2 100	2 300		2 100
100 000	3 460	350	3 200	3 600	3 250	2 500	2 300	2 900	3 150		2 850
200 000	4 370	4 200	4 000	4 950	4 450	3 450	3 200	4 000	4 400		3 950
300 000	5 000	4 800	4 600	5 950	5 400	4 150	3 850	4 800	5 300		4 750
500 000	5 950	5 700	5 400	7 550	6 850	5 250	4 900	6 100	6 700		6 050
1 000 000	7 510	7 100	6 800								
2 000 000	9 490	8 900	8 500								
5 000 000	12 920	12 000	11 400								

REGIONS IN SYDNEY (MSR)—continued

<i>Size of estimate</i>	<i>Central Western Sydney (SR)</i>	<i>Outer Western Sydney (SR) and Blacktown (C)</i>	<i>Lower Northern Sydney (SR)</i>	<i>Hornsby-Ku-ring-gai (SR) and Baulkham Hills (A)</i>	<i>Northern Beaches (SR)</i>	<i>Gosford Wyong (SR)</i>
500	210	280	250	180	220	220
1 000	290	390	340	250	300	310
3 000	480	650	570	420	500	520
5 000	600	820	720	540	630	650
10 000	850	1 150	1 000	750	850	900
20 000	1 150	1 550	1 400	1 000	1 200	1 250
50 000	1 750	2 400	2 100	1 550	1 850	1 900
100 000	2 450	3 300	2 900	2 150	2 500	2 650
200 000	3 350	4 550	4 000	3 000	3 500	3 650
300 000	4 050	5 500	4 850	3 600	4 200	4 400

REGIONS IN BALANCE OF NSW (MSR)

<i>Size of estimate</i>	<i>Hunter (SR)</i>	<i>Newcastle (SRS)</i>	<i>Illawarra and South Eastern (SRS)</i>	<i>Illawarra (SR)</i>	<i>Wollongong (SRS)</i>	<i>Richmond-Tweed and Mid North Coast (SRs)</i>	<i>Northern, Far West North Western and Central West (SRs)</i>	<i>Murray-Murrumbidgee (SR)</i>
500	290	270	300	260	220	320	310	280
1 000	400	370	410	360	300	440	430	390
3 000	660	620	690	600	500	740	720	650
5 000	840	780	870	760	630	930	910	830
10 000	1 150	1 100	1 200	1 050	850	1 300	1 250	1 150
20 000	1 600	1 500	1 650	1 450	1 200	1 800	1 750	1 600
50 000	2 450	2 300	2 550	2 200	1 850	2 700	2 650	2 400
100 000	3 400	3 150	3 500	3 050	2 550	3 750	3 650	3 350
200 000	4 650	4 350	4 800	4 200	3 500	5 200	5 050	4 600
300 000	5 650	5 250	5 800	5 100	4 250	6 250	6 100	5 550

(a) Standard errors of month to month movements from October 1997–November 1999 onwards. For standard errors for earlier periods, see previous issues of this publication.

STANDARD ERRORS

LEVEL ESTIMATES(a)—NSW AND ACT

<i>Size of estimate</i>	<i>ACT and South Eastern (SRs)</i>	<i>ACT</i>
500	280	210
1 000	390	270
3 000	620	400
5 000	770	500
10 000	1 020	600
20 000	1 340	800
50 000	1 910	1 200
100 000	2 500	1 650
200 000	3 200	2 250
300 000	3 700	2 700

(a) Standard errors of estimates from September 1997. For standard errors for earlier periods, see previous issues of this publication.

MOVEMENT ESTIMATES(a)—NSW AND ACT

<i>Size of estimate</i>	<i>ACT and South Eastern (SRs)</i>	<i>ACT</i>
500	220	170
1 000	280	210
3 000	420	310
5 000	510	360
10 000	650	450
20 000	850	570
50 000	1 200	760
100 000	1 550	960
200 000	2 000	1 200
300 000	2 300	1 370

(a) Standard errors of month to month movements from October 1997–November 1999 onwards. For standard errors for earlier periods, see previous issues of this publication.

SELF-HELP ACCESS TO STATISTICS

- CPI INFOLINE* For current and historical Consumer Price Index data, call 1902 981 074 (call cost 75c per minute).
- DIAL-A-STATISTIC* For the latest figures for National Accounts, Balance of Payments, Labour Force, Average Weekly Earnings, Estimated Resident Population and the Consumer Price Index call 1900 986 400 (call cost 75c per minute).
- INTERNET* www.abs.gov.au
- LIBRARY* A range of ABS publications is available from public and tertiary libraries Australia-wide. Contact your nearest library to determine whether it has the ABS statistics you require.

WHY NOT SUBSCRIBE?

- PHONE* +61 1300 366 323
- FAX* +61 03 9615 7848

CONSULTANCY SERVICES

ABS offers consultancy services on a user pays basis to help you access published and unpublished data. Data that is already published and can be provided within 5 minutes is free of charge. Statistical methodological services are also available. Please contact:

<i>INQUIRIES</i>	<i>City</i>	<i>By phone</i>	<i>By fax</i>
	Canberra	02 6252 6627	02 6207 0282
	Sydney	02 9268 4611	02 9268 4668
	Melbourne	03 9615 7755	03 9615 7798
	Brisbane	07 3222 6351	07 3222 6283
	Perth	08 9360 5140	08 9360 5955
	Adelaide	08 8237 7400	08 8237 7566
	Hobart	03 6222 5800	03 6222 5995
	Darwin	08 8943 2111	08 8981 1218

POST Client Services, ABS, PO Box 10, Belconnen ACT 2616

EMAIL client.services@abs.gov.au



2620110008994
ISSN 1322-0179

RRP \$21.00